

# CALL FOR TENDER

## Humanitarian Aid for Northern Iraq - Construction of Vegetable Market Area Our Ref. IRQ 1021-TND-065

Dear Sirs,

Welthungerhilfe (hereafter WHH) was established in 1962. It is today one of the largest private organizations working in the area of development cooperation and humanitarian aid in Germany. The organization is non-profit-seeking, non-partisan and non-denominational. Donations from the population at large fund our work in over 40 countries in Africa, Asia and Latin America. In addition, WHH receives grants from the Department for International Development (DFID), the Federal German Government, the European Union, the United Nations and the United States Agency for International Development.

Financed by the German Corporation for International Cooperation (GIZ) for our humanitarian aid activities in Northern Iraq, we are in the market for:

## CONSTRUCTION OF VEGETABLE MARKET AREA IN SINJAR CENTER, NINEWA GOVERNORATE, IRAQ

### 1. Instructions to tenderers

By submitting a tender, tenderers fully and unreservedly accept the conditions of this call for tenders, which will constitute the governing of contract as the sole basis of this tendering procedure, whatever the tenderers own conditions of sale may be which they hereby waive. Tenderers are expected to examine carefully and comply with all instructions, forms, contract provisions and specifications contained in this tender dossier. Failure to submit a tender containing all the required information and documentation within the deadline specified will lead to the rejection of the tender.

No account can be taken of any remarks in the tender relating to the tender dossier; remarks may result in the immediate rejection of the tender without further evaluation.

### 2. General remarks and special condition

- All materials must be new, sound, fair, in merchantable quality and in line with the technical specifications stated in the Tender Documentation.
- Visitation date is on **17 December 2019 at 11:00 AM**  
Meeting Point: Sinjar Town Municipality
- All communication and documentation must be performed in English.
- The company needs to be officially registered in Iraq, and provide a copy of the contractor Union ID.
- Bidders have to use WHH templates.

Dohuk, 11 December 2019

Welthungerhilfe Office  
Peshnas Street 51  
Masika Roj AVA - 99451  
City of Duhok – Z26/65/9  
Kurdistan Region of Iraq  
Republic of Iraq

Jonas Wiahl  
Country Director

Deutsche Welthungerhilfe e.V.  
Friedrich-Ebert-Straße 1  
D-53173 Bonn  
Tel. +49-228-2288-0  
Fax +49-228-2288-333  
[www.welthungerhilfe.de](http://www.welthungerhilfe.de)

Patron:  
Federal President Frank-Walter Steinmeier

Supervisory Board (honorary):  
Marlehn Thieme, President  
Prof. Dr. Joachim von Braun, Vice-President  
Norbert Geisler, Chairman of the Finance Committee  
Amadou Diallo  
Rita Lanius-Heck  
Prof. Dr. Conrad Justus Schetter  
Dr. Tobias Schulz-Isenbeck

Secretary General and Chairman of the Board: Mathias Mogge

Donations account:  
Sparkasse KölnBonn  
Account No. 1115  
Sort Code 370 501 98  
IBAN: DE15370501980000001115  
BIC: COLSDE33

Mitglied von Alliance 2015,  
dem Verbund internationaler  
Hilfsorganisationen

- The Contracting Authority holds the right to change quantities and slight changes of the technical specifications.
- The Contracting Authority reserves the right to accept or reject any bid, to annul the bidding process, and to reject all bids at any time prior to contract award, without thereby incurring any liability to the affected bidder or bidders.
- The safety and security of the supplier / supplier's staff, items, equipment, during the site visit or during the implementation of the project is the sole responsibility of the supplier.
- All materials, especially sand & gravels are only allowed to be excavated from clean areas of mines and explosives.
- If there is any permission needed to access the area, the bidder is in charge of obtaining the permission letter by himself. WHH will not provide any permission letter or is facilitating nor assisting this process.

### **3. Specifications/Quantities**

All applications must comply and adhere to at least the specifications and conditions described in the BOQ (Annex V).

### **4. Site location**

All work materials and items are to be supplied DDP to, **Sinjar Town, Ninewa Governorate, Iraq.**

The contractor will be responsible for all works including all materials, transportation, installation and connections.

All units need to be fully completed and functional and ready for hand over.

### **5. Work Schedule**

The work must start latest in the first half of January 2020.

The exact delivery/completion schedule will be negotiated and agreed with WHH in Duhok and will be detailed in the contract.

### **6. Ordering Party**

Deutsche Welthungerhilfe  
Peshnas Street 51  
Masika Roj AVA  
99451 Duhok, KRI

### **7. Consignee**

Deutsche Welthungerhilfe  
Peshnas Street 51  
Masika Roj AVA  
99451 Duhok, KRI

### **8. Documents**

The following documents must be submitted before tender closing date:

- Signed and stamped Tender Document. (6 Pages)
- Duly filled, signed, and stamped Pre-qualification document. (Annex I, 3 pages)

- Duly filled and signed and stamped Quotation Summary (Annex II)
- Duly filled and signed and stamped References (Annex III)
- Duly filled and signed and stamped Site Visit (Annex IV)
- Duly filled and signed and stamped BOQ (Annex V)
- Copy of company registration in Iraq / Certificate of Establishment (شهادة التأسيس)

Following documents will be requested from the contractors after finishing the work:

- Commercial Invoice (original) in English on the letter headed paper addressed to the Ordering Party
- Acceptance of service notes signed by Consignee & Contractor

## **9. Inspection**

The Contracting Authorities shall be entitled to inspect, examine measure and test the components, materials and workmanship, and check the progress of preparation, fabrication or manufacture of anything being prepared, fabricated or manufactured for delivery under the contract, in order to establish whether the components, materials and workmanship are of the requisite quality and quantity. This shall take place at the place of manufacture, fabrication, preparation or at the place of acceptance or at such other places as may be specified in the Contract.

For the purposes of such tests and inspections, the Contractor shall:

a) Provide to the Contracting Authorities or his representative, temporarily and free of charge, with such assistance, test samples or parts, machines, equipment, tools, labor, materials, drawings and production data as are normally required for inspection and testing.

b) Provide access to the Contracting Authorities or his representative, at all reasonable times to the place where the tests are to be carried out.

An independent surveyor company shall also execute this inspection on quality and quantity at time and place prior or at loading (before shipment to the destination). One inspection per project will be on behalf of the Contracting Authorities. Any additional inspection shall be because of the contractor. Goods not meeting agreed quality would be rejected. In case goods are rejected, the contractor will contractually be obliged to pay already incurred fees for rejected goods and for such fees that will become payable to the inspection company due to multiple interventions and/or fruitless visits and for goods inspected but eventually remained unshipped.

## **10. Penalties**

Delivery schedule will be negotiated and fixed in order. In the event of delay in delivery caused other than by force majeure, the respective Contracting Authorities are entitled to make use of a penalty of **5/1000** per day of the total value of the work still to be completed, on the concerned delivery date. The penalty will be deducted from the invoice. In the event of incomplete delivery caused by the contracted tenderer, the respective Contracting Authority is entitled to deduct the losses from the invoice. In case of damaged cargo caused by inappropriate packaging or handling errors, the respective Contracting Authority reserves the right to deduct from the relevant order sum an amount according to the variance to the requested specification. In case the quality is not in line with specifications initially agreed by both sides, the contracted tenderer has to inform the respective Contracting Authority as soon as possible. Goods not meeting agreed quality can be rejected by the respective Contracting Authority, but if the respective Contracting Authority accept these goods, a deduction from the order sum and a penalty will be negotiated.

## **11. Guarantee**

The Contractor is obliged to fix subsequently recognized construction defects within (3) Three Months after delivery at its own cost. The Contracting Authorities shall be entitled to reserve 5% (5 per cent) of the total value of the contract to guarantee this service. Exact conditions will be negotiated and fixed in contract if needed.

## **12. Prices**

The price includes the cost of materials, transportation, installation, connections, all related work as specified in the bill of quantities, technical specifications and drawings, Taxes, ICR and overhead cost.

All prices must be indicated in **USD (United States Dollars)** currency ONLY.

Prices in other currencies are not accepted.

## **13. Payment Conditions and schedule**

Payment shall take place in **USD (United States Dollars)** currency only.

Supplier need to have USD bank account and possibility to receive international USD bank transfer.

Payments due by the respective Contracting Authorities shall be made to the bank account mentioned on the Quotation Summary (Annex II) of the tenderer and confirmed in the Contract.

The contractor is in charge of covering the bank fees. **WHH WILL NOT PAY EXTRA FOR BANK FEES.**

Payment shall be made in Cheque or Transfer against document (CAD) within twenty (20) working days from the receipt of the correctly signed and stamped documents stated in Article 8. Documents at WHH in Duhok.

Payment schedule on account shall be made in accordance with the progress of the works in accordance with achievement of following executed works:

- **1<sup>st</sup> installment:** 45% of the total amount  
According to measured works after completion of 50%
- **2<sup>nd</sup> installment:** 50% of the total amount  
According to measured works after completion of 100%
- **3<sup>rd</sup> installment (Retention):** 5% of the total amount  
To be paid within 3 three months after full acceptance of the works by WHH.

Change of the payment schedule could be done by WHH only, according to the work progress measured by WHH Engineers.

## **14. Selection Criteria**

### **Awarding criteria:**

- 70% Price
- 15% Implementation period
- 5% Related Projects (Number of Related Contracts with NGOs)
- 10% Technical Interview (**only shortlisted supplier from initial evaluation 70% Price, 15% Implementation period, 5% Related Projects will be invited for technical interview**).

The assigned points per listed criteria for price will be calculated in reference to the obtained proportion from the best offer criteria's result in comparison to the offered value per criteria (multiplied by 0.70 respectively).

Number of Related Contracts with NGOs will be evaluated as follow:

- Please attach only your work related contracts with your bid
- If contracts are not attached, points will not be considered

1 Contract	2 Contracts	3 Contracts	4 Contracts	5 Contracts
1 point	2 points	3 points	4 points	5 points

#### Exclusion criteria:

Any of the following documents missing or not duly filled will be considered a reason for exclusion:

- Annex I, Annex II, Annex III, Annex IV, Annex V
- Company registration documents or Contractor Union ID

### **15. Calculation Mistakes**

Bids submitted by interested bidders will be checked for any arithmetical errors in computation and summation. Errors will be corrected by the evaluation committee as follow:

Where there is a discrepancy between a unit price and the total amount derived from the multiplication of the unit price and the quantity, the unit price as quoted will be the price considered. Amounts corrected in this way will be binding on the bidder. If the bidder does not accept them, the bid will be rejected.

### **16. Tender Conditions**

The tenders, all correspondence and documents related to the tender exchanged by the tenderer and the Contracting Authorities must be written in the language of the procedure, which is English.

Quotations must specify all details according to the tender text. Incomplete offers and offers that arrive later than the deadline for reply will be automatically excluded. All responses will be opened by the Welthungerhilfe tender committee.

Suppliers who do not receive a written feedback twenty-five (25) days after expiry of the deadline have not been successful.

The deadline for receiving Questions about this tender is: **18 December 2019** at 12:00 hours Iraq Local Time.

All question or enquiries should be directed to: [tender.iraq@welthungerhilfe.de](mailto:tender.iraq@welthungerhilfe.de)

For any enquiries related to the site visit and Duhok office location, please contact the following phone number, **00964 751 741 3884** all other technical question regarding this Call for Tender should be directed to the above-mentioned email address.

**SINCE THE SITE VISIT IS MANDATORY AND IS A REASON FOR DISQUALIFICATION, THE ANSWERS WILL BE SENT BY EMAIL ON 19 DECEMBER 2019 AT 15:00 NOON IRAQ LOCAL TIME ONLY TO SUPPLIERS WHO ATTENDED THE SITE VISIT.**

The Contracting Authority, in Duhok, must receive the tenders before:

**26 December 2019 at 12:00 local time**

The Tender Package must include all the documents specified in Article 8 of these Instructions and be delivered to the following address:

**Deutsche Welthungerhilfe  
Peshnas Street 51  
Masika Roj AVA, 99451 Duhok  
Republic of Iraq**

The Tender Package must be submitted in a sealed and stamped envelope with the following information:

- a) To Welthungerhilfe or WHH
- b) The reference code of this tender: **IRQ 1021-TND-065**
- c) The company name (Your Company)

**OFFERS SENT BY E-MAILS OR FAX WILL NOT BE ACCEPTED OR CONSIDERED.**

**The following Annexes form part of this Tender Documentation:**

- Annex I:** Pre-qualification of Suppliers
- Annex II:** Quotation Summary
- Annex III:** References
- Annex IV:** Site Visit Template
- Annex V:** Bill of Quantity (BOQ)
- Annex VI:** Drawings

## Annex I: Pre-Qualification of Suppliers *(Page 1/3)*

Company Name	
Phone Number & Email	
Legal Form	
Founded (Year)	
Established in (Country)	
Bank Details (Account Holder, Bank Name, IBAN, BIC, Swift, Currency)	
VAT-Registration Number	
Physical Address	
Name of Chief Executive Officer (CEO)	
Place and Date of Birth of CEO	
Name of Owner	
Place and Date of Birth of Owner (if individual)	
Website	
Sales & Marketing Contact	
Range of Services provided by the Company (Company Portfolio)	
For internal use of WHH only	

(Page 2/3)

## Policy Statement of Welthungerhilfe

### a. Welthungerhilfe supports the goals of the UN Global Compact

The UN Global Compact is a strategic policy initiative for businesses that are committed to aligning their operations and strategies with ten universally accepted principles in the areas of human rights, Labour, environment and anti-corruption.

#### Human Rights

- Principle 1: Businesses should support and respect the protection of internationally proclaimed human rights; and
- Principle 2: make sure that they are not complicit in human rights abuses.

#### Labour

- Principle 3: Businesses should uphold the freedom of association and the effective recognition of the right to collective bargaining;
- Principle 4: the elimination of all forms of forced and compulsory Labour;
- Principle 5: the effective abolition of child Labour; and
- Principle 6: the elimination of discrimination in respect of employment and occupation.

#### Environment

- Principle 7: Businesses should support a precautionary approach to environmental challenges;
- Principle 8: undertake initiatives to promote greater environmental responsibility; and
- Principle 9: encourage the development and diffusion of environmentally friendly technologies.

#### Anti-Corruption

- Principle 10: Businesses should work against corruption in all its forms, including extortion and bribery.

The Global Compact is global and local; private and public; voluntary yet accountable.

Further information is available on this website in different languages:

<https://www.unglobalcompact.org>

### b. Welthungerhilfe (WHH) renounces all forms of terrorism and money laundering

Welthungerhilfe renounces all forms of terrorism and will never knowingly support, tolerate or encourage terrorism or the activities of those who embrace terrorism or money laundering.

Consistent with numerous United Nations Security Council resolutions, including S/RES/1269(1999), S/RES 1368(2001) and S/RES1373 (2001) and the European Union, Welthungerhilfe is firmly committed to the international fight against terrorism and in particular against the financing of terrorism. It is the policy of Welthungerhilfe to seek to ensure that none of its and its donor funds are used, directly or indirectly, to provide support to individuals or entities associated with terrorism or money laundering. Therefore, Welthungerhilfe will match their suppliers and Service providers against the Sanctions lists on a regular basis. By submitting an offer, suppliers and service providers agree to this.



(Page 3/3)

## Supplier Declaration

We, \_\_\_\_\_ (name of company) hereby declare that

- a) we are not in bankruptcy proceedings, judicial insolvency proceedings or in liquidation, that we have not ceased our commercial activities and are not in a comparable situation by virtue of similar proceedings referred to in the national legal provisions,
- b) we have not received a sanction by legally binding judgment for reasons which bring into doubt our professional reliability,
- c) We comply with our duty to pay social insurance contributions, taxes or other levies in accordance with the legal provisions of the state in which we have our office, the state of the consignee, or the state where the contract is performed. We assure that we will comply with the legislation applicable and common standards in terms of wages, social legislation and occupational safety and health.
- d) we have not received a legally binding sentence due to fraud, corruption, participation in a criminal association, or another act directed against the financial interests of the International Humanitarian Aid Community,
- e) no serious breaches of contract due to non-performance of our contractual obligations have been ascertained in connection with another contract or a contract awarded from the International Humanitarian Aid Community,
- f) we are providing you with all the information required in connection with participation in a tender,
- g) in respect of contracts which are ultimately paid for out of European Community funds, no one has accused us of breach of contract due to gross violation of our contractual obligations,
- h) we have not been excluded as a contract partner by the European Community due to ethical issues,
- i) we assure the European Commission, the European Anti-Corruption Bureau and the auditors of the European Community reasonable access on demand to our business and accounting documents for the purpose of checks and audits,
- j) we respect basic social rights and condemn child labor,
- k) We are informed that Welthungerhilfe will conduct a check to ensure that partners/suppliers do not appear on official sanctions lists of UN and the European Union.

---

Date, Company Name, Signature of Owner or CEO, Name in Block letters, Stamp

## ANNEX II: Quotation Summary

Write in English and **PRICE IN USD** (English numbers)  
Dully fill out all grey marked areas!

No	Description	Total Price, USD
1	Construction of Vegetable Market Area in Sinjar Center	
Total Price for this tender		
TOTAL PRICE IN WORDS:		
<b>Bank details</b>  Recipient Name: <input type="text"/>  Bank Name : <input type="text"/>  Account No. : <input type="text"/>  SWIFT Code : <input type="text"/>  IBAN : <input type="text"/>		

Implementation period (number of calendar days needed to complete the project)?	_____ Calendar days
---	---------------------

**The offer will remain valid 30 days after submission of the offer**

I, undersigned agree, these prices are for the goods and materials meeting the requirements as indicated in Annex II of this tender and to the packing, transport, delivery and other conditions mentioned in this tender.

**Note:** Any discrepancies from the given technical requirements or other discrepancies need to be explicitly mentioned.

\_\_\_\_\_  
Name and Date

\_\_\_\_\_  
Signature and Stamp

## ANNEX III: References

Please indicate only references for related contracts or contracts with NGO's or UN agencies

No	Name of Organization	Contact person	Mobile and Email	Type of contract
1				
2				
3				
4				
5				
6				
7				

IF YOU HAVE MORE REFERENCES - PLEASE COPY AND COMPLETE THIS SAME PAGE AND CONTINUE.

References which are not written in this page, will not be considered

---

Name and Date

---

Signature and Stamp

## ANNEX IV: Site Visit

Meeting Point: Sinjar Town municipality

GPS coordinates: 36.315690,41.871945

Visited on date:

**17 December 2019 at 11:00 AM**

\_\_\_\_\_  
Company Name

\_\_\_\_\_  
Name and Date

\_\_\_\_\_  
Signature

### Conformation of visit from WHH representative:

Name: \_\_\_\_\_

Signature: \_\_\_\_\_

Date: \_\_\_\_\_

## ANNEX V: BOQ – Construction of Vegetable Market Area in Sinjar Center:

### Vegetables Market in Sinjar

Sinjar Center, Sinjar, Ninewa Governorate

36.315690,41.871945

### TECHNICAL SPECIFICATION AND BILL OF QUANTITIES

#### Notes:

- a) All the works must be executed in accordance with the Iraqi General Technical Specifications (I.G.T.S.) published by Ministry of Housing and Reconstruction/ Republic of Iraq, the drawings, contract documents and instructions of the engineer.
- b) All the works and materials must be approved by the project engineer
- c) The materials shall be tested and approved by the National Centre of Construction Laboratories (NCCL).
- d) The contractor must employ a permanent resident engineer to be present at the project site during the execution period.
- e) The contractor must set-up a temporary and adequate office at the project site.
- f) All the materials shall be new and deemed to be of best available type in the local market and as approved by the project engineer.
- g) The item description herein after means "Preliminaries, supply of all materials, manpower, transportation, equipment, tools, machinery, construction plant & equipment, site facilities, temporary works and all the other works required including overheads", as approved by the project engineer.
- h) The contractor shall check all items and measurements given in the BoQ. All changes, additional quantities etc. require the written approval by the project engineer. A site assessment by the contractor is mandatory.
- i) Please, read all the documents carefully, then price it.

NO.	ITEM	UNIT	QTY	Unit Cost USD	Total cost USD
<b>A</b>	<b>Site Works</b>				
<b>1</b>	Supply and Provide all machines and tools to clean site with remove all old existing debris in the area, remove debris for destroyed rooms in the site and remove all debris to the place specified by the municipality.	LS	1.0		

Sub Total					
B	Civil Works				
1	<b>Foundation:</b> Excavation for foundation with 30cm deep and 60cm wide in all types of soil (hard & soft) and dimension for footing foundation of columns with(W*L*D 1x1x0.5 m). The work includes compacting the soil subgrade with compactor, Laying 10cm of compacted crushed stone under the foundation and content the foundation of bathroom(W*L*D 0.4*14*0.3m) and foundation of septic tank(W*L*D 0.4*12*0.2m), and casting the foundation with 1:1.5:3 reinforced concrete (C20) mix. and edges footing for columns combined by RCC tie beam is 40cm thick, 60cm wide of tie beam and reinforcement is 2 layers of 16mm steel bars, each layer with 3 bars fixed with 10mm steel bar stirrups at 20cm c/c and 8 dowels Ø16mm risen from footing for columns with clear concrete cover 7cm from all sides of foundation. Steel bar grade 60. The price includes cost of supplying and fixing the required molds, nylon and reinforcement works.The level of compaction for the subgrade and crushed stones should be approved in the field by the site engineer, All specifications and details should be according to instructions of supervisor engineer and drawing (sheet no. 2,3 & 5).	M3	35.0		
2	<b>New Foundation of Fence wall:</b> Supply and provide all tools, materials and workers to excavate the foundation( all type of soil even if rocky soil) with dimension 20 cm depth and 40 cm width the price include cost of casting of plain concrete (1:2:4) mix ratio according to instruction of supervisor engineer drawing (sheet no. 19)	m3	23.0		
3	Backfilling inside of foundation and walkway with soil type approved by the supervisor engineer the cost include well compaction of backfilled materials. According to supervisor engineer and drawing (sheet No.1&2)	m3	400.0		
4	<b>New Columns:</b> supply and provide all materials and tools for casting reinforced concrete for columns (40*40cm ) and height 3.6m and using 8 vertical steel bar Ø16mm and Ø10mm for stirrups@ vertical distance 20 cm C/C and clear concrete cover of 4cm use concrete type C25 the cost include carpenter rents.steel bar grade 60. according to instruction of supervisor engineer and drawing (sheet no. 2,3, 4 & 5).	m3	18.0		

5	<b>Beams:</b> supply and provide all materials, machines and tools for casting reinforced concrete for beams (width 0.4 x depth 0.5m) and length 250m with mix ratio 1:2:4 and reinforcement 2 layers of 12 mm steel bars grade 60, each layer 4 bars fixed bars with 10 mm steel bars stirrups at 20 cm c/c with clear concrete cover 4cm from all sides of beam, the price include cost of installation of wood forms, reinforcement works and carpenter rents. all work according to instruction of supervisor engineer and drawing (sheet no.3 & 4 ).	m3	50.0		
6	<b>R.C.C Roof Slab 22.4*27.4m W*L and 15 cm thickness, roof slab for bathroom (W*L 4 x2.5 x Thickness0.15 m) and roof slab for septic tank (3x 3 x 0.15 m):</b> Preparation of materials and tools for casting R.C.C Roof Slab with mix ratio 1:2:4 and using Ø12mm steel bars grade 60 at 30cm distance c/c in both direction and 10 holes for roof drainage with dia.3 inch and making proper slope in direction of roof drainage holes, the cost include installation of wood form, reinforcement installation with clear cover of concrete 3 cm, the distribution of reinforcement should be in both direction and according to the drawings and instructions of supervisor engineer and drawing (sheet no.3 & 4 ).	m3	96.0		
7	<b>New Footings for gate door column:</b> Supply and provide all tools, materials and workers to excavate 4 pits for two gate door footings with dimensions (80*80cm ,50 cm depth)) and then back fill the first 10 cm with sub-base materials well compacted and then filled the remaining depth( 40 cm) with reinforced concrete type C25 (1:1.5:3) mix ratio by using steel bar Ø12mm @10 c/c in both direction and 4 dowels Ø12mm with clear concrete cover 7 cm according to instruction of supervisor engineer and drawing (sheet no. 10).	m3	1.1		
8	<b>New Columns for Gate Doors:</b> supply and provide all materials and tools for casting reinforced concrete for 4 column (40*40cm ) and height 2m and using 4 vertical steel bar Ø12mm and Ø10mm for stirrups@ vertical distance 20 cm C/C and clear concrete cover of 4cm use concrete type C25 the cost include carpenter rents. according to instruction of supervisor engineer and drawing (sheet no. 10).	m3	2.0		

9	<b>wall building:</b> supply and provide all materials, machines and tools for building the wall around the out side of building with dimension (width 0.2 x heighth 3 m) and length 74m by solid concrete blocks and wall for bathroom with dimension of block(15 x 20 x 40 cm) and wall of septic tank by block with cement sand mortar with mix ratio of 1:3 with thickness 15 cm. According to the supervisor eingineer and drawing (sheet no.13).	m3	51.0		
10	<b>Concrete Block wall 40 cm thickness:</b> Supply and provide all materials to build the wall over the concrete foundation for leveling the surface for buckfilling by using solid concrete blocks (40*20*15 cm) and cement sand mortar 1:3 with varied height of wall.according to supervisor engineer and drawing (sheet No. 13).	m3	17.0		
11	<b>Building of Fence Wall:</b> supply and provide materials to build wall (length 280 x height 1.8 x width 0.15 m) with solid concrete blocks with dimensions(40*20*15cm) and cement sand mortar with mix ratio of 1:3 with thickness 20cm and provide construction joints at regular intervals 4m.according to supervisor engineer and drawing (sheet no. 19 & 15)	m3	76.0		
12	<b>R.C.C floor building and floor of walkway with (W*L 30*25m) and 10 cm thickness and floor of bathroom:</b> Supply and provide all materials and tools for casting concrete (mix ratio 1:2:4) for floor the cost include layer of BRC mesh 10*10 cm C/C, 6mm and labor rent. According to the supervisor of engineer and drawing (sheet no, 1,3,15 & 17).	m3	80.0		
13	<b>Preparation of all materials and tools for plastering the building and bathroom</b> - of interior and exterior with cement sand mortar 1:3 and thickness of 2 cm include preparation layer for closing all joint then apply the finishing and all surface should be smooth and edges are straight the cost include skill labor rent.according to supervisor engineer and drawing (sheet no. 4)	m2	1250.0		
14	supply and provide all materials, tools and machines to <b>plastering interior of old room by gypsum plastering with dimensions (W*L 6*4m)</b> and ceiling as instructed by supervisor engineer. Work includes removing damaged gypsum plastering and despose it in suitable place and according to supervisor engineer and drawing (sheet no. 4).	m2	66.0		
15	<b>crushed gravel:</b> supply and provide all materials, machines and tools for brushes the crushed gravel on all surface area of site with 5cm thikness and well compacted.according to supervisor engineer and drawing (sheet no. 1).	m3	453.0		



16	<b>Stairs:</b> supply and provide all materials, machines and tools for casting stairs with width 1.2m, rise 20cm and tread 30cm and using Ø12mm@20cm c/c spacing, for temperature and shrinkage reinforcement using Ø10mm@20cm c/c spacing and 2 support column with 0.4x0.4m using 4 vertical steel bar Ø12mm and Ø10mm for stirrups@ vertical distance 20 cm C/C and clear concrete cover of 4cm use concrete type C25 the cost include carpenter rents. According to supervisor engineer and drawing (sheet no. 1, 8 & 9).	m3	4.0		
17	<b>columns and slab for ventilation in middle of structure:</b> supply and provide all material, machines and tools for casting 4 column with dimensions (0.4*0.4*1.2 m) and slab 6.4*6.4 m with thickness 15cm and rise around base of slab for ventilation about 10cm. According to supervisor engineer and drawing (sheet No.11 & 15).	m3	7.0		
18	<b>Paint with emulsion acrylic paint for exterior walls:</b> Paint using 2 colors- green WHH logo and beige. (good quality of paint available in local market). according to supervisor engineer and drawing (sheet no 11&15)	m2	500.0		
19	<b>Painting with acrylic emulsion paint for interior walls:</b> Preparation of surfaces, removal of loose particles, cleaning, filling cracks, smoothen surface in general. Primer coat, high quality paint for inside surfaces, two coats of emulsion. after clearing all rooms, move in all items after completion. Protection of surfaces with plastic sheet and tapes. Protect switches, installations etc. (Turkish paint- Betek, Jotun, Polisan or other approved WHH brands).	m2	600.0		
20	<b>Paint with oil paint for interior walls:</b> (Turkish paint- Betek, Jotun, Polisan or other approved WHH brands). Paint walls until the 1,20 m level. Painting will be done only after repairing and smoothing of all surfaces- 2 layers.	m2	300.0		
21	<b>Surrounding Walkway walls 20 cm thickness and entrance stairs for two inside doors:</b> Supply and provide all materials to build the walls of walkway with varied height and stairs with 5.4 m width, 0.3 m tread and 0.2 m riser by using solid concrete blocks (40*20*15 cm) and cement sand mortar 1:3.(Sheet No.1, 15 & 17).	m3	13.0		
<b>Sub Total civil work</b>					
<b>C</b>	<b>Electrical Work</b>				

1	<b>Power connection line</b> , from public power line to main board, cable (4*25 mm2), over ground, usual quality and dimensions, installing connections to the existing electrical system, wiring, penetration.	M.I	150.0		
2	Providing , installation and testing <b>new main electric board</b> (iron plate with dimenssion 80cm *60 cm ,2mm thickness ) with main circute breaker best quality (Ui=AC660 V,ue=AC 220 V (50Hz/60Hz),In =250 A ,Te=+40°C),containing busbar, gage reading voltage,HZ and amperage) with all accessories and fittings., ,and main circuit breaker (150 amp European made ,best quality ),with all required work.(the cost include installation).	NO.	1.0		
3	<b>New Distribution Board:</b> Providing, installing and testing new PVC distribution board for each one main circuit breaker 63 Amp and bus bar, and 16 circuit breaker 10-30 Amp, Saudi made for all boards with all required connections and penetration and fixing in walls and distribution of circuit will be according to the instruction of supervisoor engineer .	NO.	2.0		
4	<b>Power connection line:</b> from main board to distribution bords. the cable (2*4 mm2 standard), under plastic strips, best quality and dimensions, installing connections to the main and distribution electrical bords, wiring, penetration.	M.I	130.0		
5	providing and installation <b>electric (ventilation fans 8")</b> by (2*2.5mm2 power wire) for WC ,including all required work, fixing,connecting to electricity. Acoording to supervisor engineer and drawing (sheet No.14)	NO.	18.0		
6	<b>Electric fans:</b> Providing , installation and testing new electric fans(Suspended Ceiling Fan Drop Grid Type,European made with quarantee 4 years) with(2*2.5 mm2 electric wires Turkish made) switch,fittings ,and all required,installation and conection work.	NO.	16.0		
7	supply and install with all the required works <b>single switch 13 Amp</b> Edison Emaraties with wire 2*2.5mm from distribution board, box and all connection and any other related work as instructed by the site engineer.	No.	29.0		
8	<b>Interiors lightening:</b> Providing, installatoin and test new interiors lightening ( Pin light down light LED. guarantee 2 years,best quality ) ,with establishment (2*1.5 mm2 electric wires Turkish made best Quality) ,including wiring,replacing lamps, bulbs, switches, sockets, and all conections and associated work.	No.	54.0		
9	<b>Exterior lightening point(water proofing lights):</b> Supply, install, test and commission a complete outdoor, lighting point including all conductors, cables( standard 1.5mm2), conduits (galvanized), switches, boxes, flexible connection and all other accessories, from distribution board to lighting point, lightening fixture ( LED 18 Watt and double fluorescent 26 watt with protection for outdoor .guarantee 1 years).	No.	26.0		

Sub Total					
D	Fittings,steel work,plastic work (Windows and Doors Works)				
1	Supply and installation of <b>new main entrance slide gate door 4x2m (WxH) for fence.</b> using iron pipe 80*40*3mm, and 2mm iron plate, rail road, wheels, handle, lock and welding with all necessary accessories price include two coat of anti-rust paint and two coat of oil paint (Turkey paint best quality- Betek, Jotun, Polisan or other approved WHH brands), the paint will done only after all surfaces have been smoothened poperly and according instructions of supervisor engineer and drawing (sheet no.1 & 6).	NO.	2.0		
2	Supply and installation of <b>new main entrance slide gate door 4.6x3m (WxH) for building.</b> using iron pipe 80*40*3mm, and 2mm iron plate, rail road, wheels, handle, lock and welding with all necessary accessories price include two coat of anti-rust paint and two coat of oil paint (Turkey paint best quality- Betek, Jotun, Polisan or other approved WHH brands), the paint will done only after all surfaces have been smoothened poperly and according instructions of supervisor engineer and drawing (sheet no.1 & 7).	NO.	4.0		
3	Supply, install <b>new iron doors</b> (1*2 m), using 20*20*2.5mm iron pipe for circumference and diagonal frams and double plate 2 mm weld to both side of fram Price includes filling the space between two plates with cork and painting with tow coat of anti-rust paint and two coat of oil paint approved by supervisor engineer. including the installation of door lock and all messing parts of door such as door frame and door hinges.	NO.	1.0		
4	Supply and install <b>new PVC doors</b> for WC- 0,9x2m. The price includes transportation of all materials, installation using all necessary materials. Materials used: PVC frames, hinges, handles, locks, pvc panels, screws, sealants. According to supervisor engineer and drawing (sheet no.16)	NO.	2.0		
5	<b>Septic tank:</b> supply and provide all machines and tools to do opening cover by iron (40 x 40 cm) and the septic tank is provided with Ventilation pipe with 2" galvanized steel pipe extended above 3 meters as instructed by site engineer	L.S	1.0		

6	<b>install new handrail:</b> the main fram made of steel pipe section (50*25*2mm).at top and bottom along stair way with a hight of 90cm to stair ways with vertical steel pipe high 90cm and section (30*30*2 mm). the space between it each 1 m and horizontal steel pipe with section (20*20*2mm) in. and the space between it 15cm. price shall include cost of anti rust paint and two layers from oil paint, and all the necessary accessories to complete the work. as instructionby the engineer and drawing (sheet no.18).	M.I	8.0		
7	supply and provide all materials, machines and tools for <b>steel fram of ventilation</b> by iron hollow section with (50mm*50mm*2.5mm) and BRC with (7mm*7mm*dai 6mm). The cost include iron hollow section, BRC and blacksmith rent and anti rust paint and two layers from oil paint. According to supervisor engineer and drawing ( sheet No.11&12)	m2	20.0		
8	Install <b>new PVC windows</b> turkish type as instructed by supervisor engineer. The work include all the requird frams, opening in windows for air cooler,key locks,handles,latches,hinges and proper repairing and finishing around the windows frames with cement / gypsum as required. as instructed by the supervisor engineer.	m2	2.0		
<b>Sub Total</b>					
<b>E</b>	<b>Sanitary Work, Plumbing, Water Supply Works</b>				
1	<b>New water tank:</b> Supply and install new water tank of 1.5 m3 (thickness of plate 1.4mm) with steel base (angles of 2inches and 1.5 mm) on roof. Install PPR pipes and valves connections to the toilet system, with full set , fittings , according to supervisor engineer and drawing (sheet no.16).	NO.	1.0		
2	<b>New handwash basins for all WCs:</b> Supply and install handwash basins 40x60cm Turkey type . The basins are equipped with taps mixer, connection pipes and all works and fittings. According to the instruction of supervisor engineerand drawing (sheet No.14 & 16).	NO.	2.0		

3	<b>Roof rain water drainage Pipes.</b> Supply and install GI pipes 3" for rain water drainage of the latrines roof with all connections and fittings elbows,sockets etc. according to supervisor engineer and drawing (sheet no.15)	NO.	10.0		
4	<b>Toilets:</b> 1. toilet ceramic eastern WC base. 2- supply and installation new PPR pipes 3/4 inches "Turkish made" and water spray with all the necessary accessories and fittings and PPR valves, 3-connect to water supply system,4-connect to the septic tank with new pipes dia 100 mm, fittings, 5- supply and install New flushing system(ceramic) for eastern toilets include water container (10-12liters) valves pipes and all accessories. with pipes metallic cleaning hose for Eastern WCs.according to supervisor engineer and drawing (sheet No.14)	NO.	2.0		
5	<b>New flush tank 16 liters for Eastern WCs:</b> Supply and install new flushing 16 liters tank+ pipe ,best quality and metallic cleaning hose- for WC and teachers' WC. Including all required work.	NO.	2.0		
6	<b>New mixer taps chrome double type:</b> install taps with all fittings ,mixers hot and cold lines. The best quality and all water accessories with all required work.	NO.	2.0		
<b>Sub Total</b>					
<b>F</b>	<b>Site clearance and cleaning work</b>				
1	Site clearance and cleaning work	L.S	1.0		
<b>Sub Total</b>					
<b>A</b>	<b>Site Work</b>				
<b>B</b>	<b>Civil Work</b>				
<b>C</b>	<b>Electrical Work</b>				
<b>D</b>	<b>Fittings,steel work,plastic work (Windows and Doors Works)</b>				

<b>E</b>	<b>Sanitary Work, Plumbing, Water Supply Works</b>	
<b>F</b>	<b>Site clearance and cleaning work</b>	
<b>Total Price in USD</b>		
<b>Implementation period in Calander days</b>		

**The offer will remain valid thirty (30) days after submission of the offer**

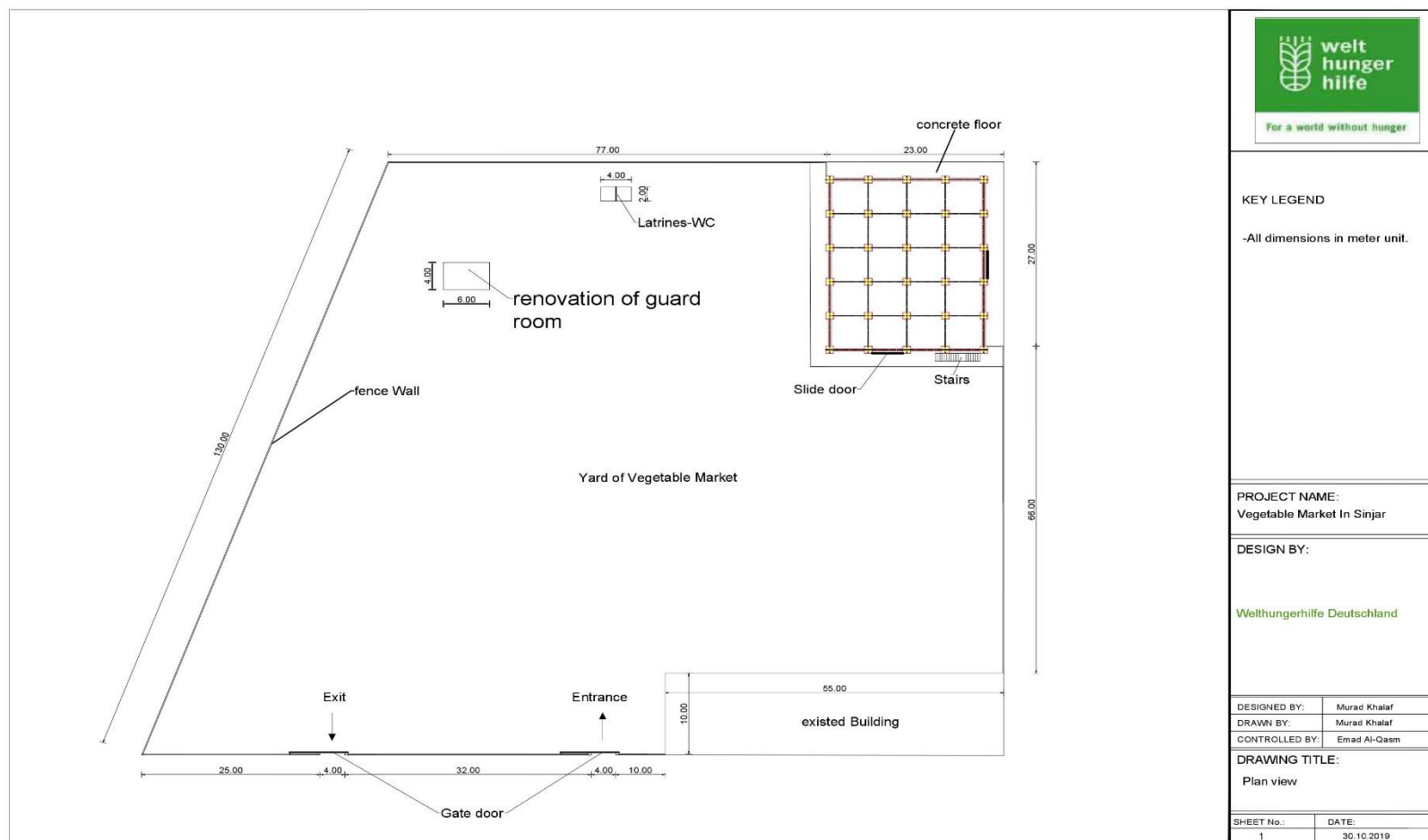
I, undersigned agree, these prices are for the goods meeting the requirements as indicated in Annex II of this tender and delivery, payment and other conditions mentioned in this tender.

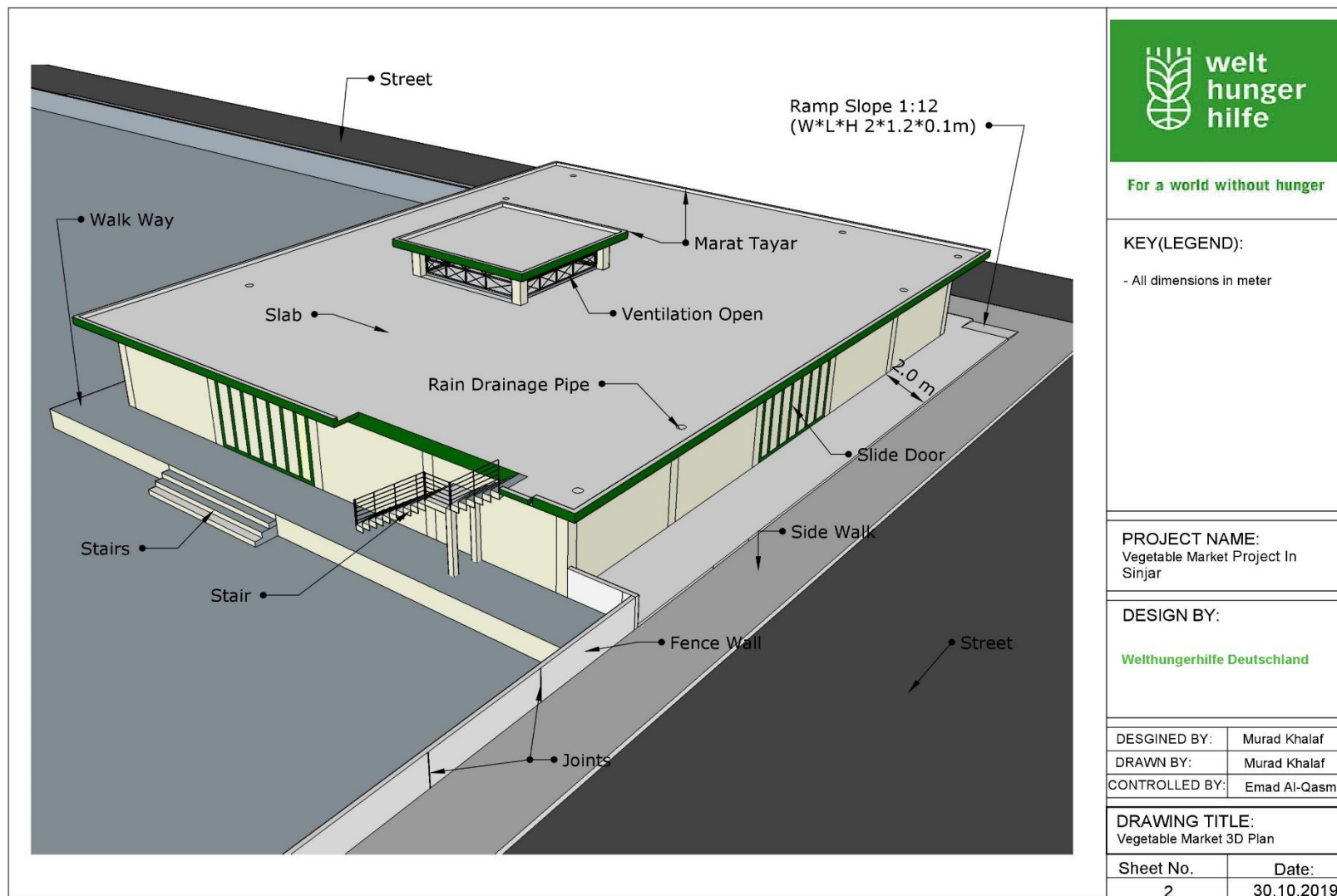
**Note:** Any discrepancies from the given technical requirements or other discrepancies need to be explicitly mentioned

\_\_\_\_\_  
Name and Date

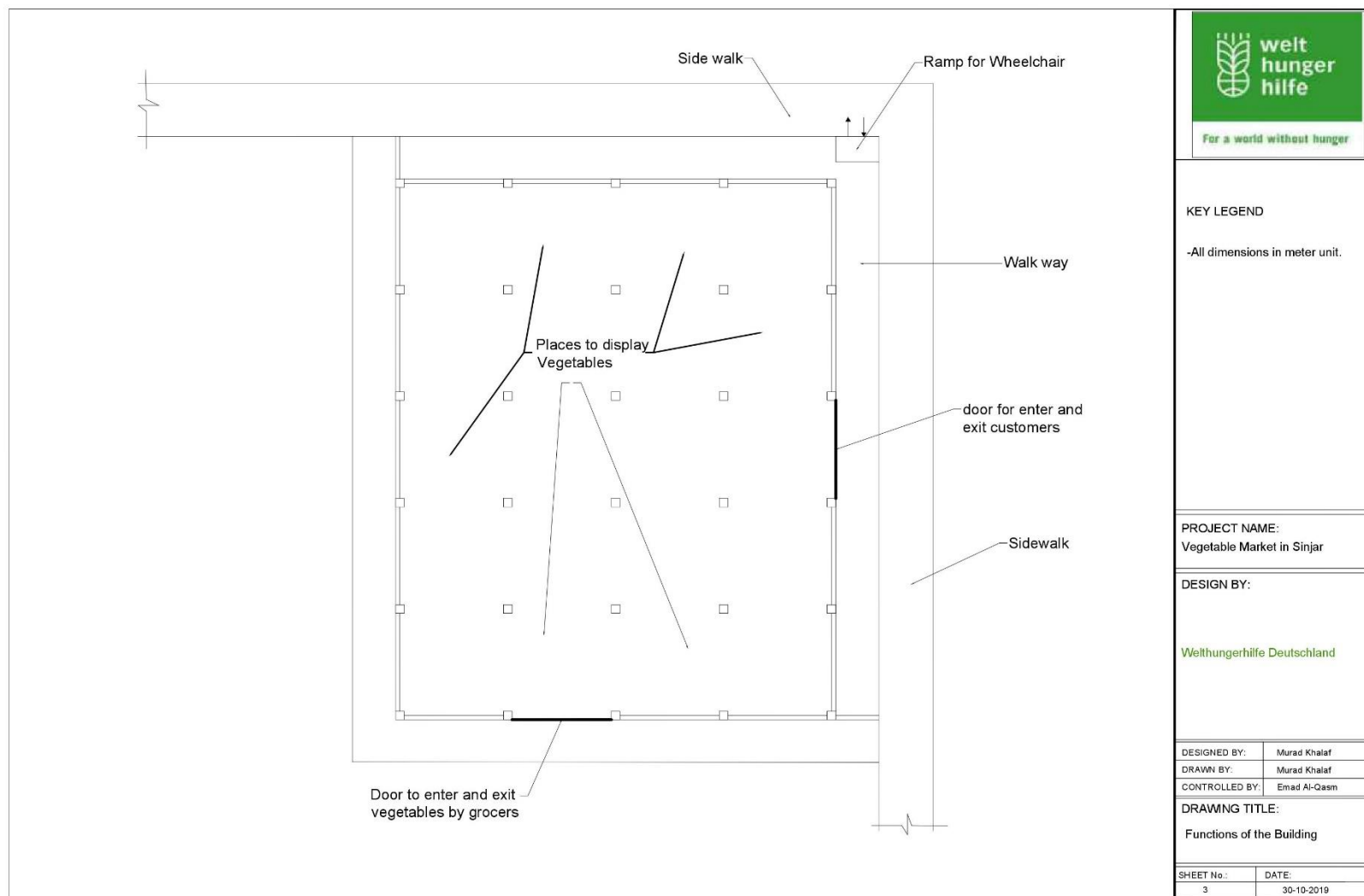
\_\_\_\_\_  
Signature and Stamp

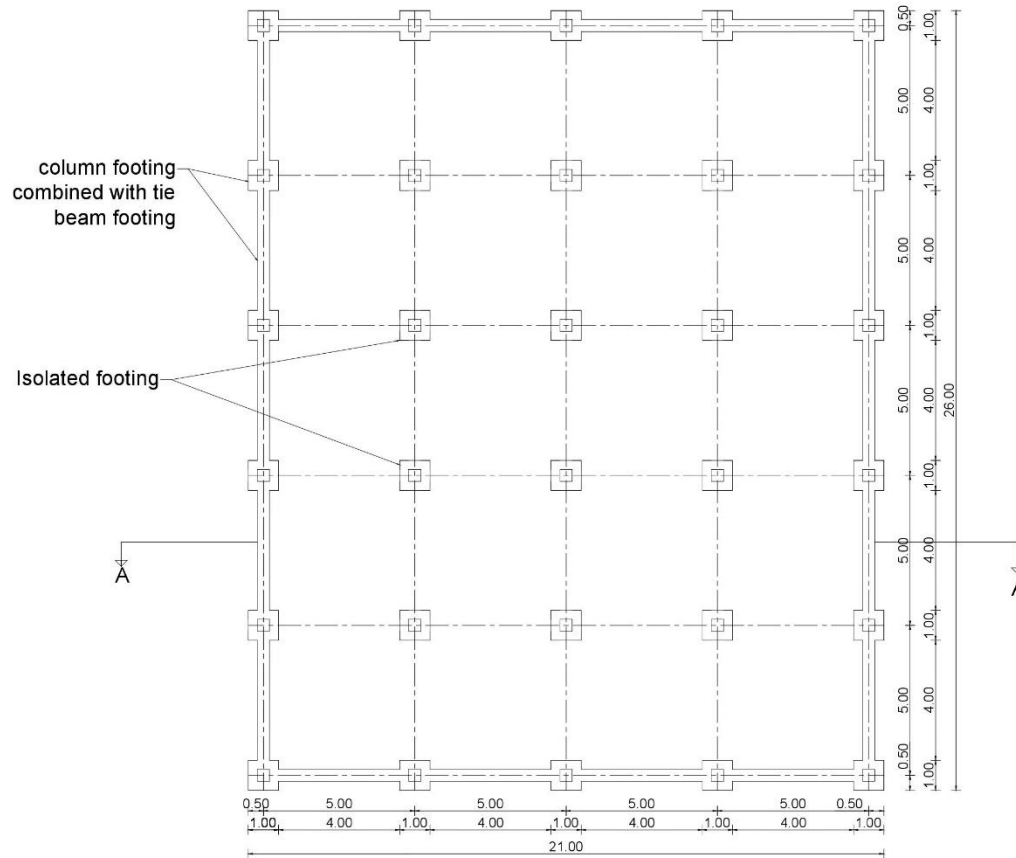
## ANNEX VI: DRAWINGS – Construction of Vegetable Market Area in Sinjar Center:











For a world without hunger

#### KEY LEGEND

- All dimensions in meter unit.
- All column's dimension L\*W (0.4\*0.4 m)
- Width\*Depth of all tie beam (w\*D=0.6\*0.4m)
- Dimensions of footing of columns (W\*L\*D=1\*1\*0.4 m)

PROJECT NAME:  
Vegetable Market in Sirjar

DESIGN BY:

Welthungerhilfe Deutschland

DESIGNED BY: Murad Khalaf

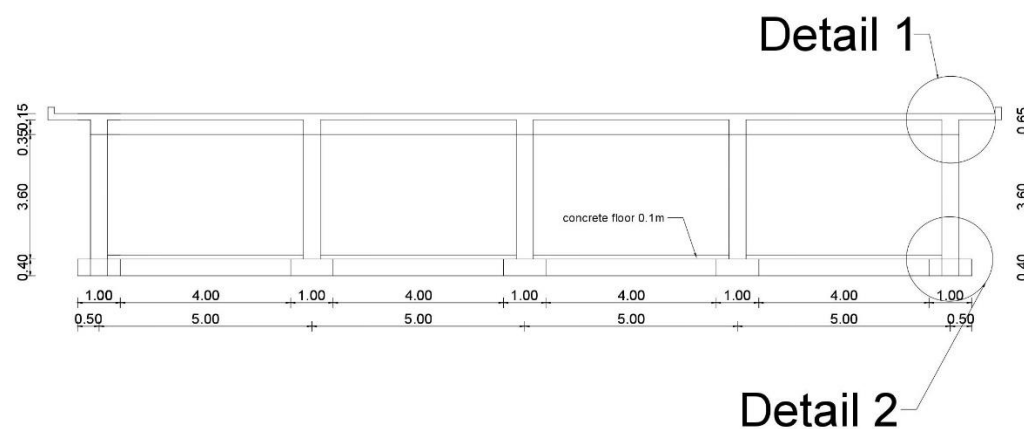
DRAWN BY: Murad Khalaf

CONTROLLED BY: Emad Al-Qasbi

DRAWING TITLE:

Foundation and column Plan

SHEET No.:	DATE:
4	30-10-2019



For a world without hunger

#### KEY LEGEND

-All dimensions in meter unit.

#### PROJECT NAME:

Vegetable Market in Sinjar

#### DESIGN BY:

Welthungerhilfe Deutschland

DESIGNED BY: Murad Khalaf

DRAWN BY: Murad Khalaf

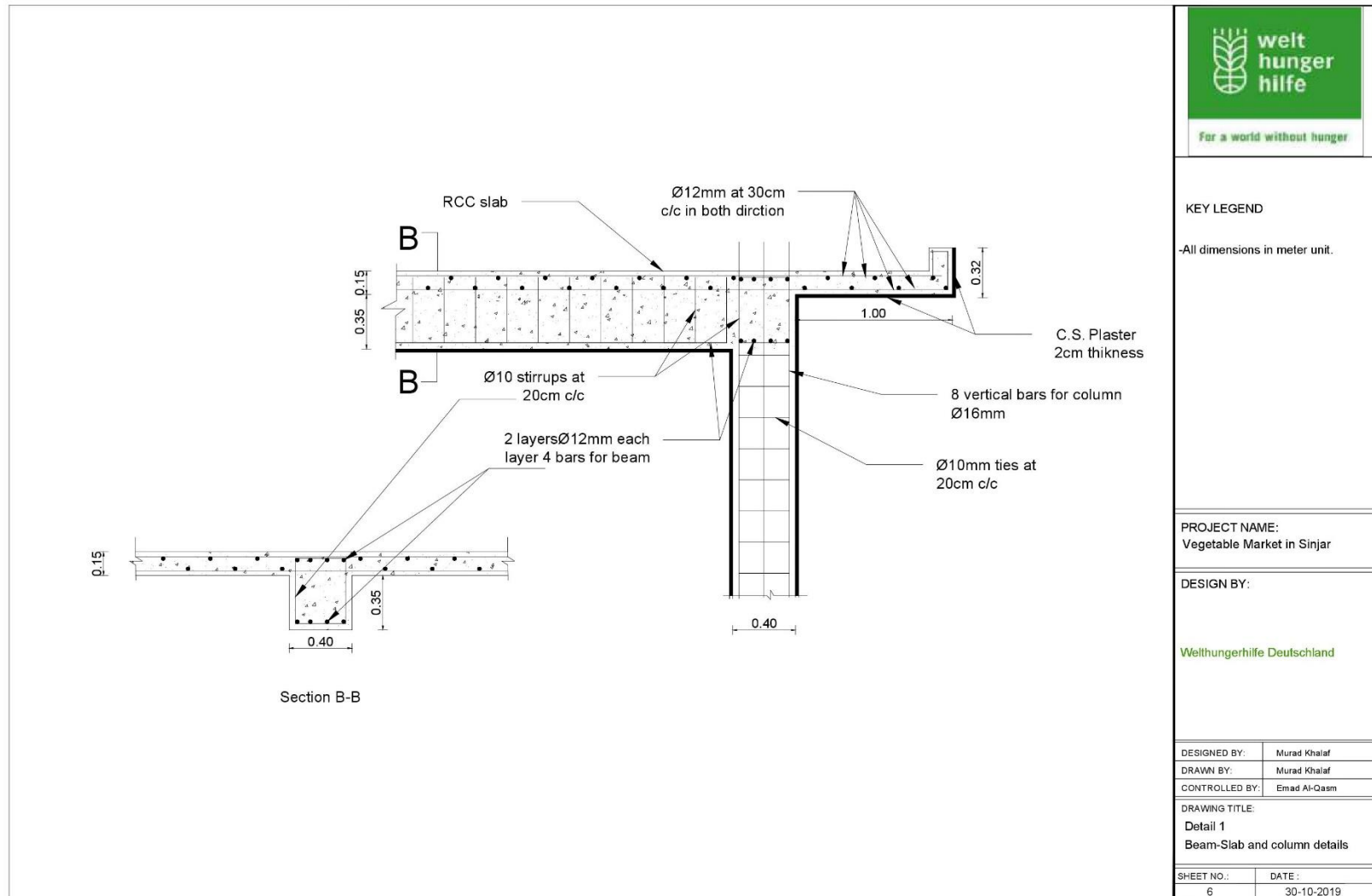
CONTROLLED BY: Emad Al-Qasbi

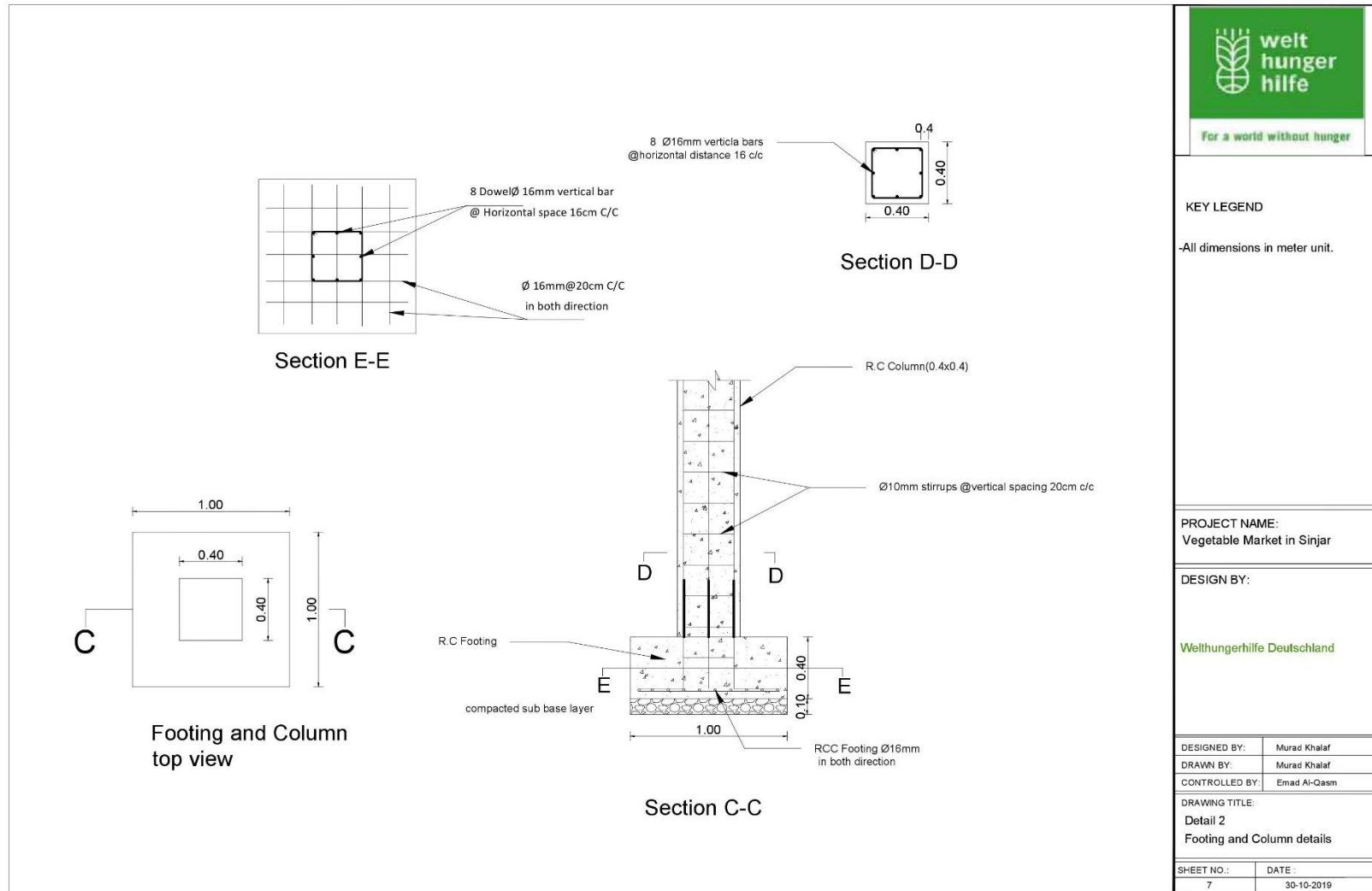
#### DRAWING TITLE:

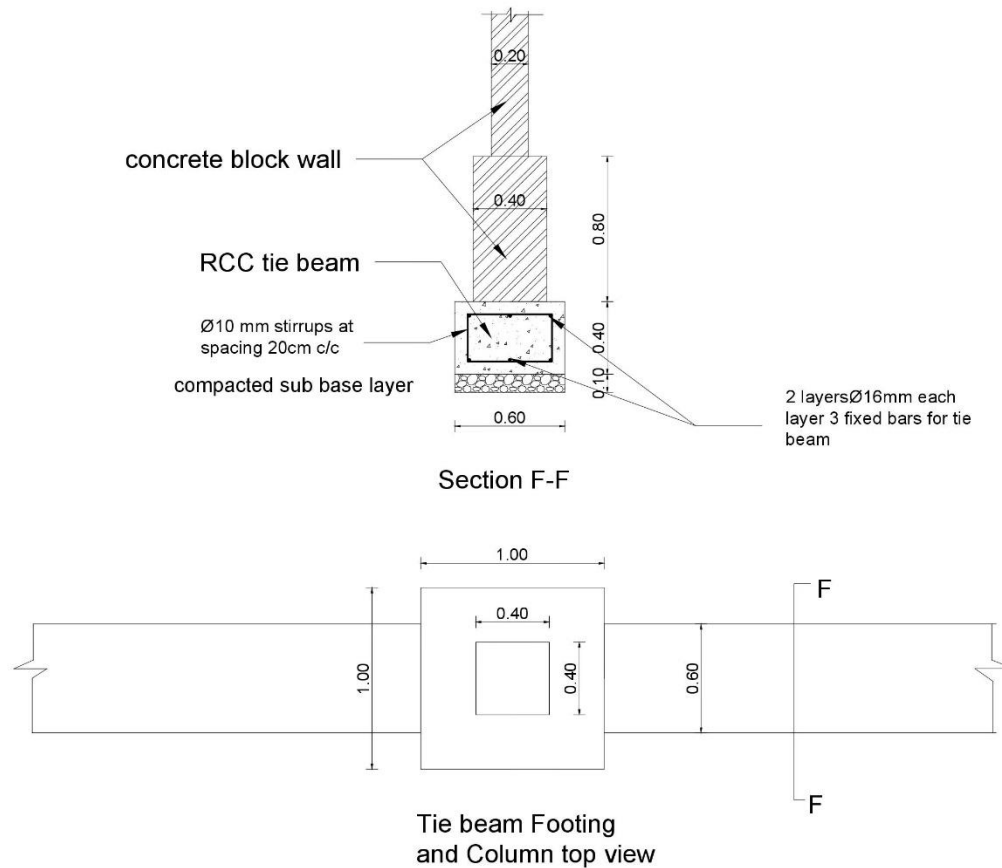
Section A-A

SHEET No.: 5

DATE: 30-10-2019







For a world without hunger

#### KEY LEGEND

-All dimensions in meter unit.

PROJECT NAME:  
Vegetable Market in Sinjar

DESIGN BY:

Welthungerhilfe Deutschland

DESIGNED BY: Murad Khalaf

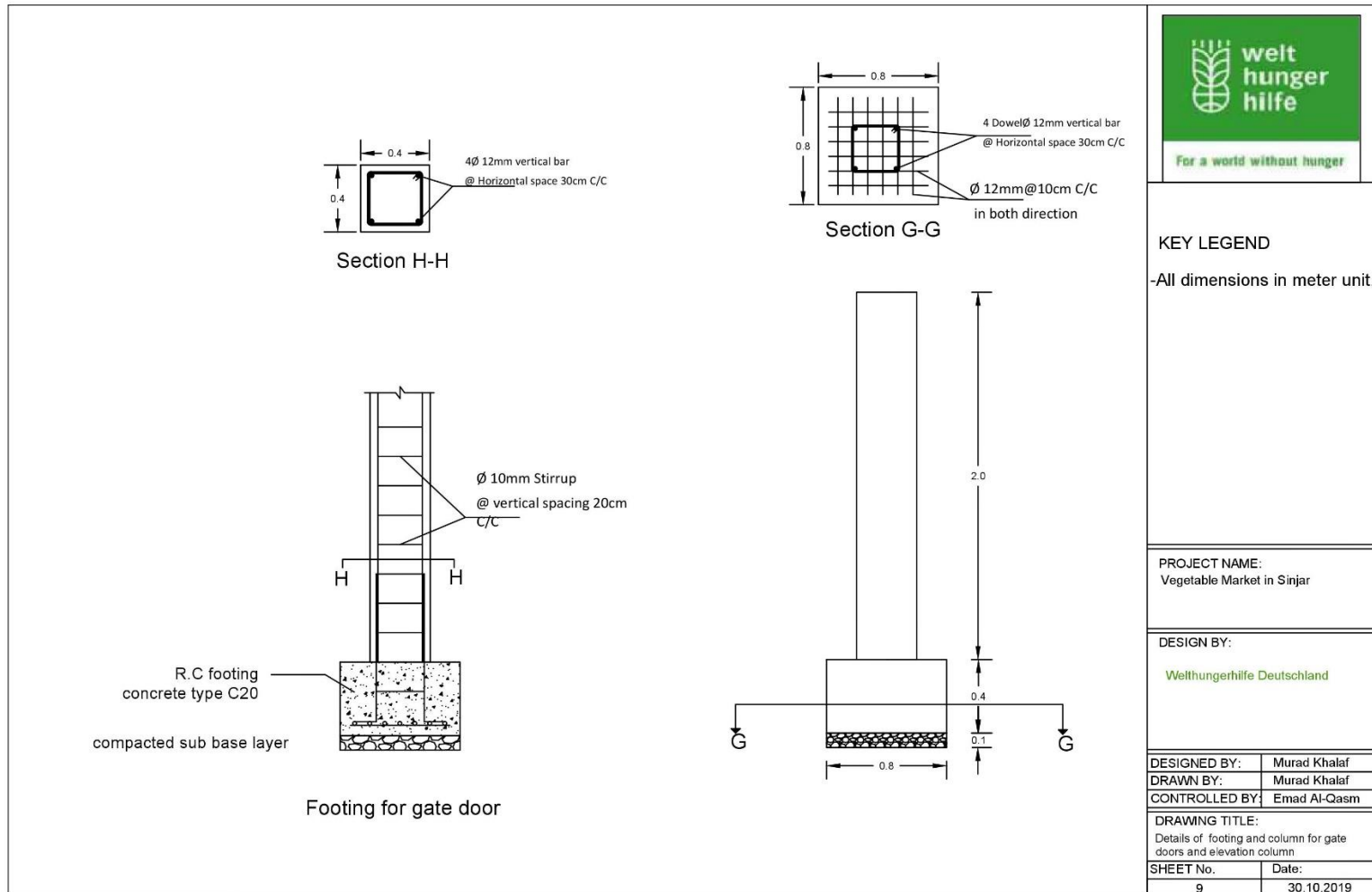
DRAWN BY: Murad Khalaf

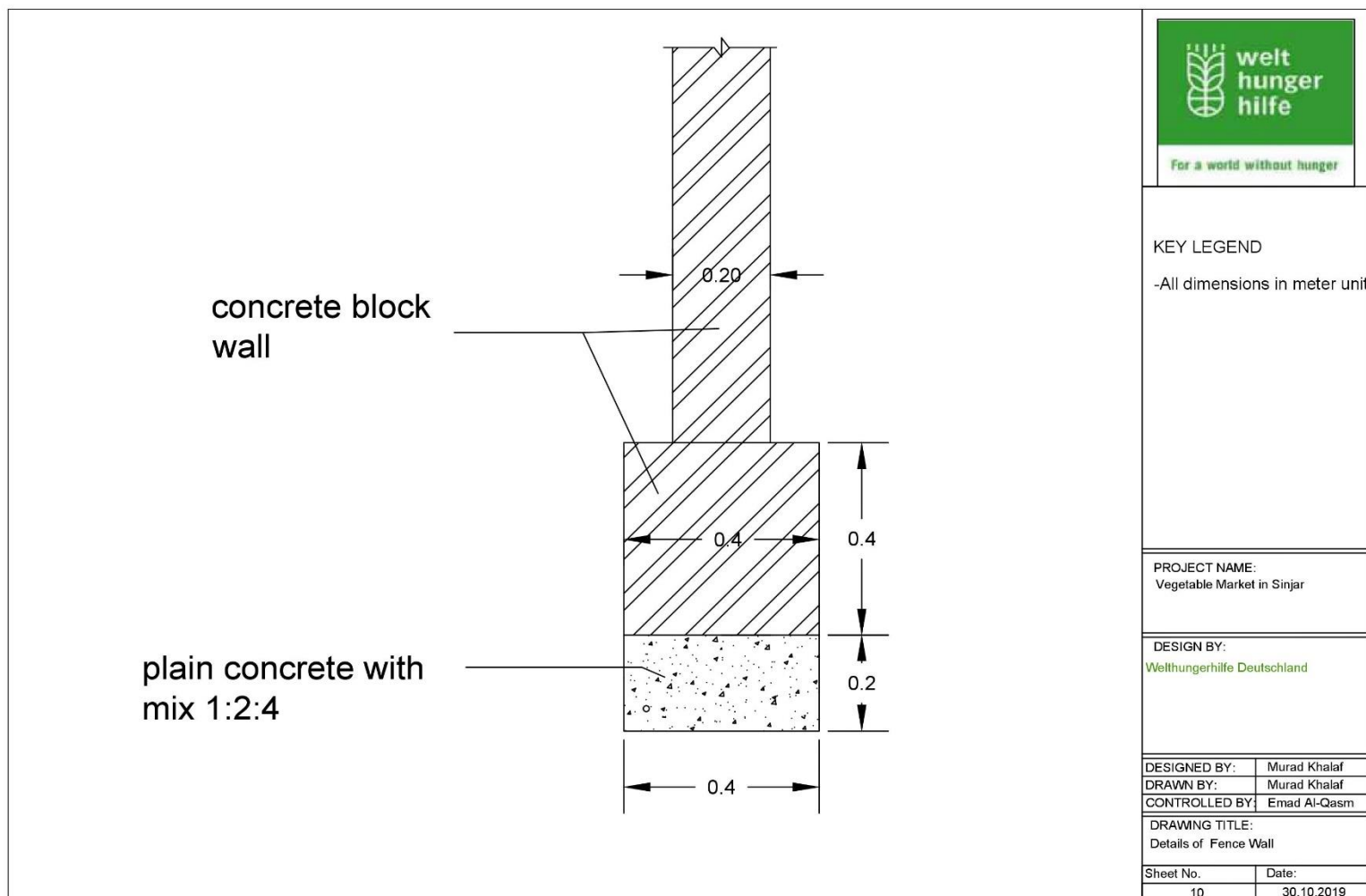
CONTROLLED BY: Emad Al-Qasbi

DRAWING TITLE:

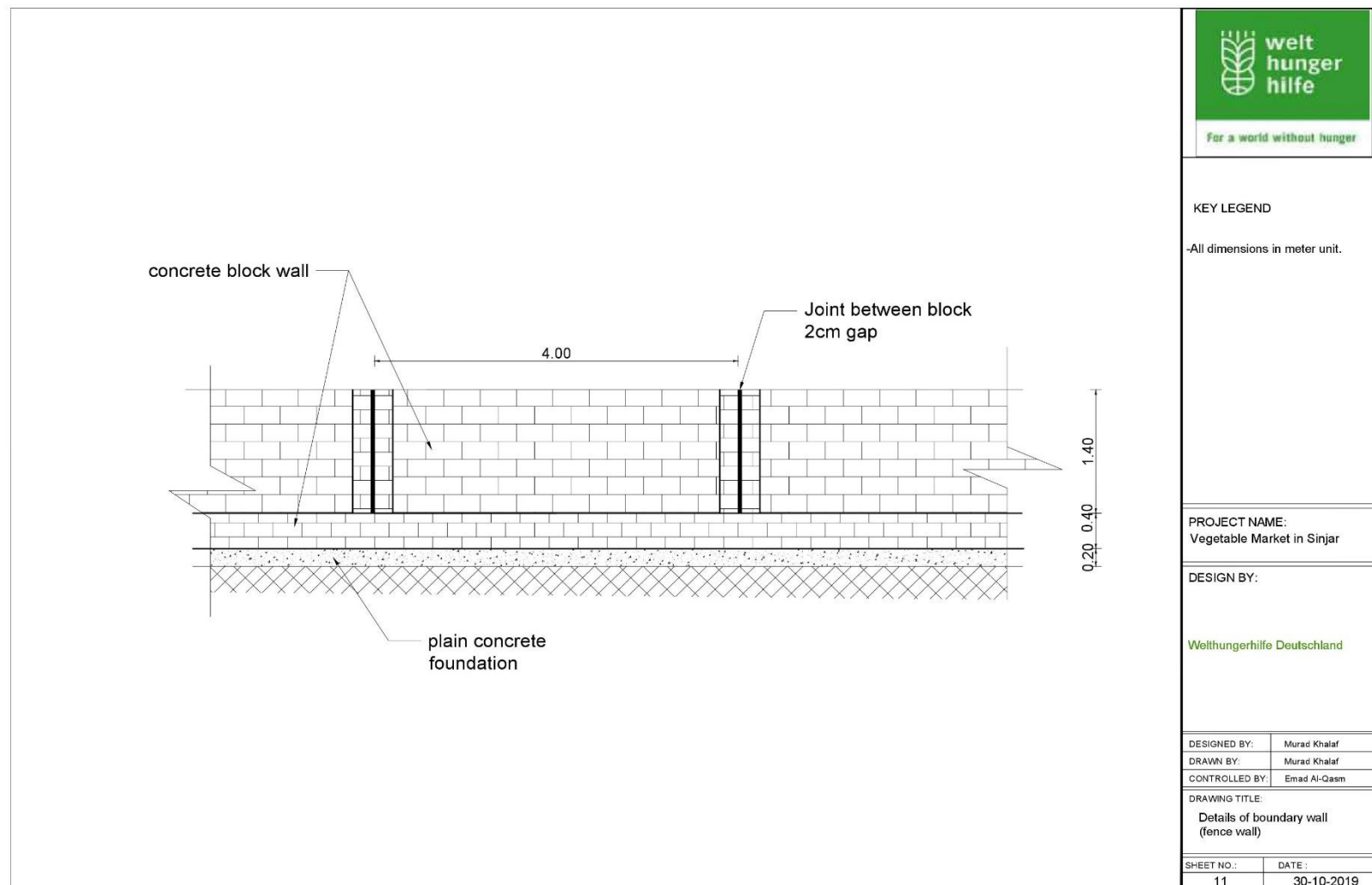
details of tie beam

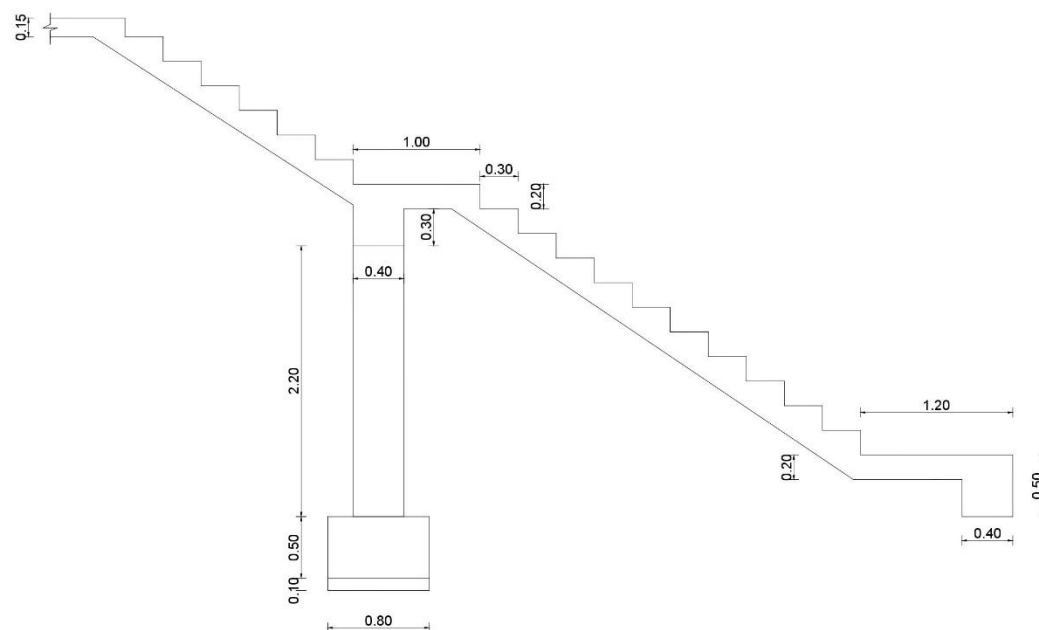
SHEET NO.:	DATE:
8	30-10-2019











KEY LEGEND

-All dimensions in meter unit.

PROJECT NAME:  
Vegetable Market in Sinjar

DESIGN BY:

Welthungerhilfe Deutschland

DESIGNED BY:	Murad Khalaf
--------------	--------------

DRAWN BY:	Murad Khalaf
-----------	--------------

CONTROLLED BY:	Emad Al-Qasbi
----------------	---------------

DRAWING TITLE:

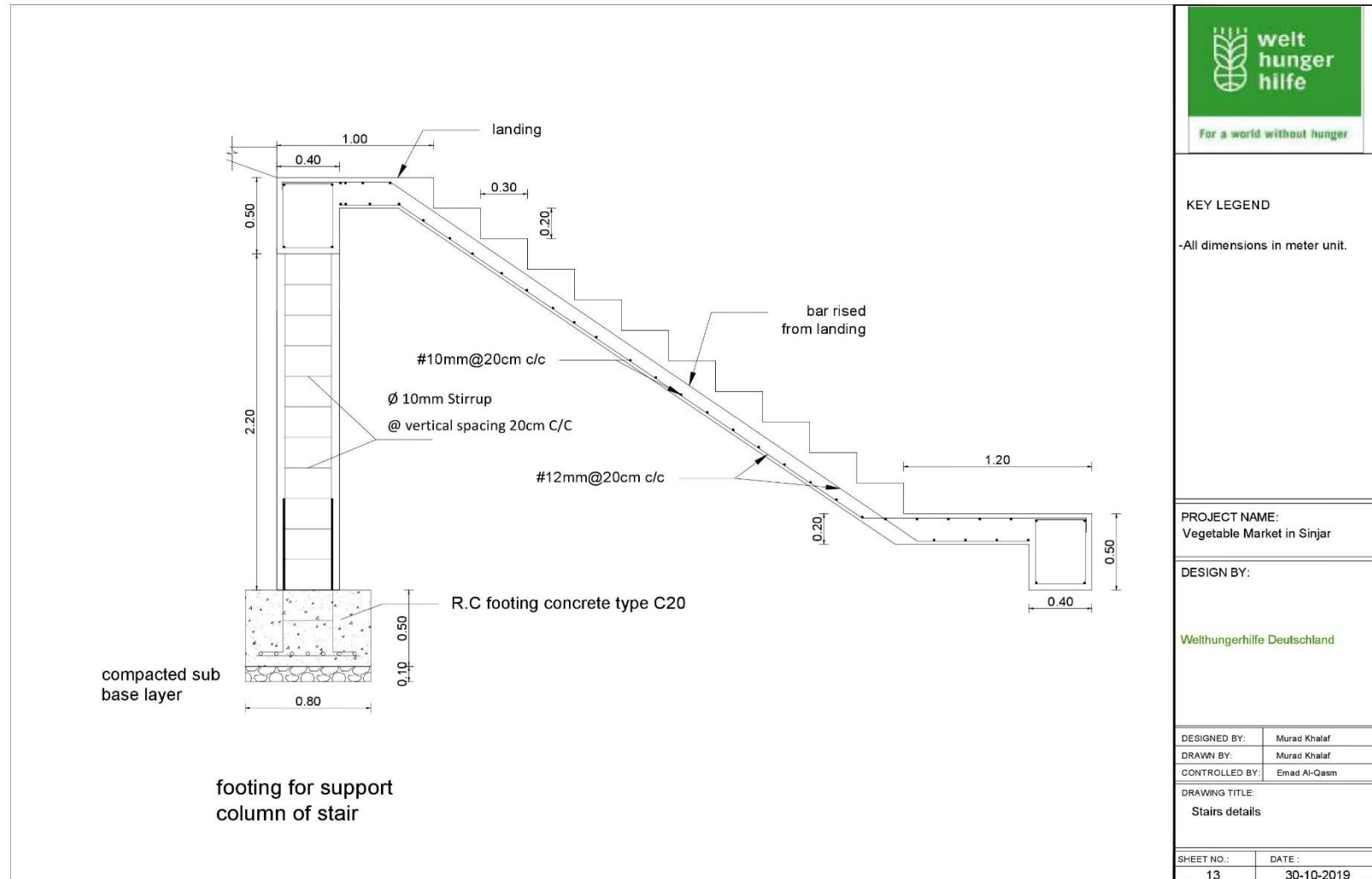
### Stairs Plan

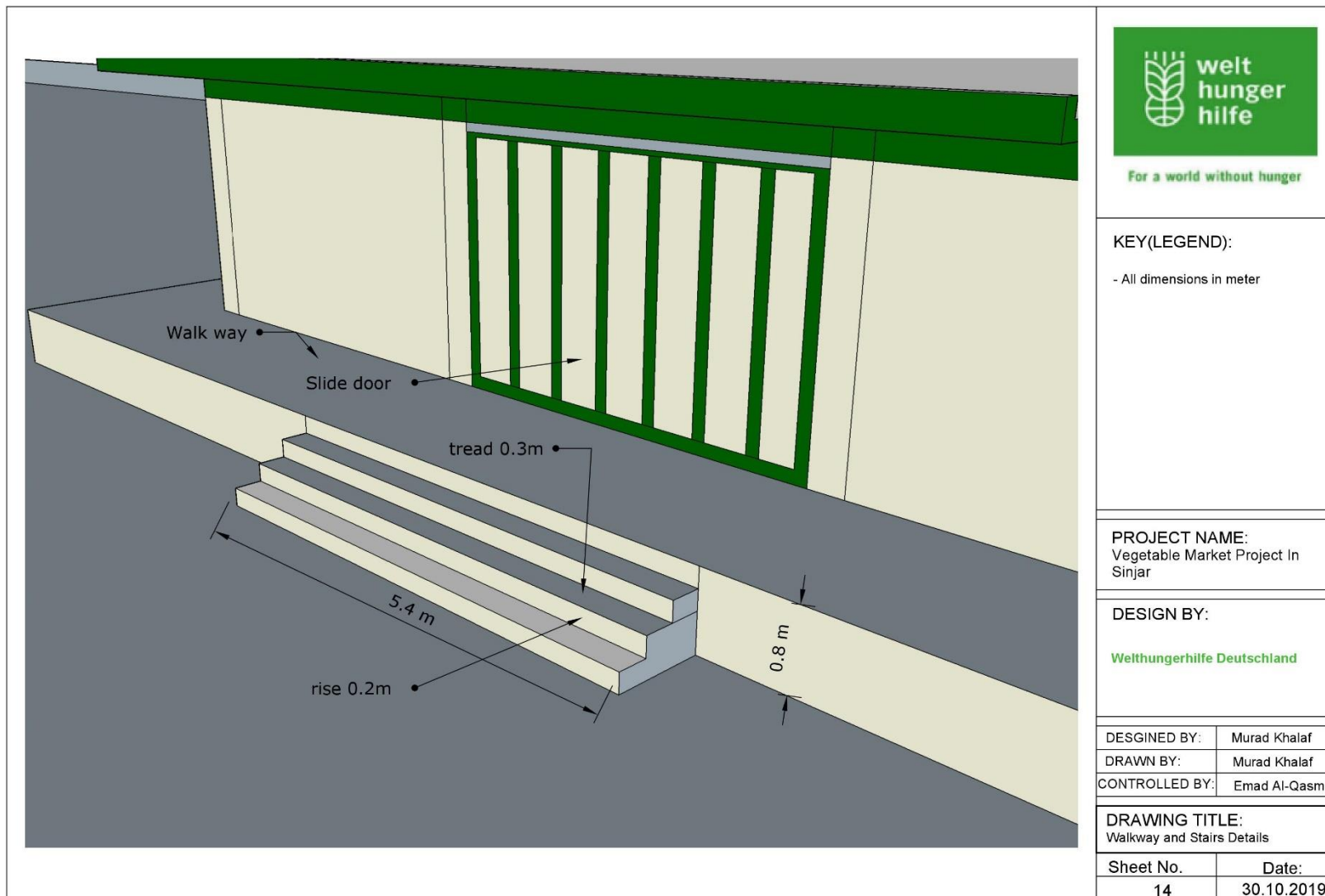
SHEET NO.:

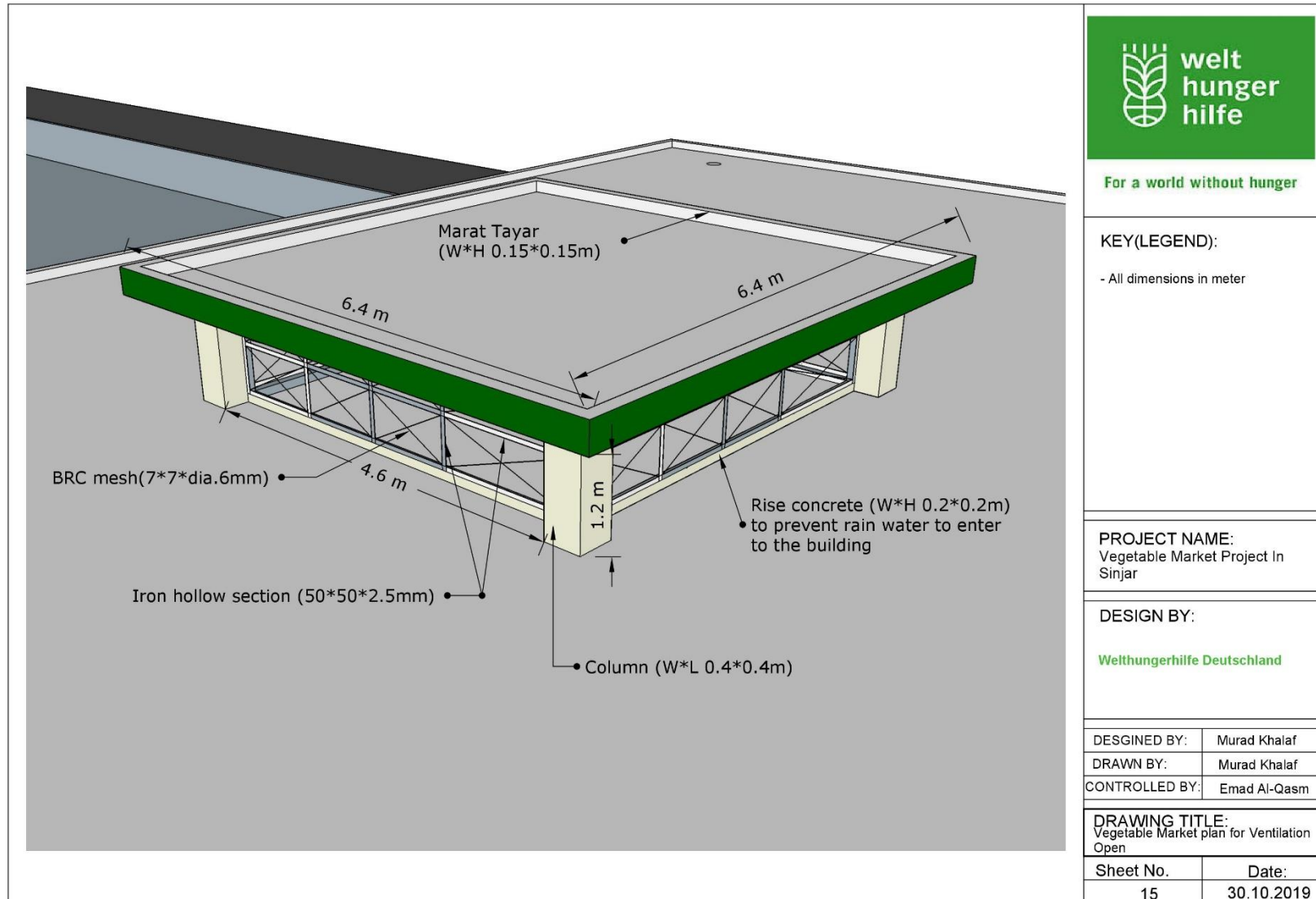
12

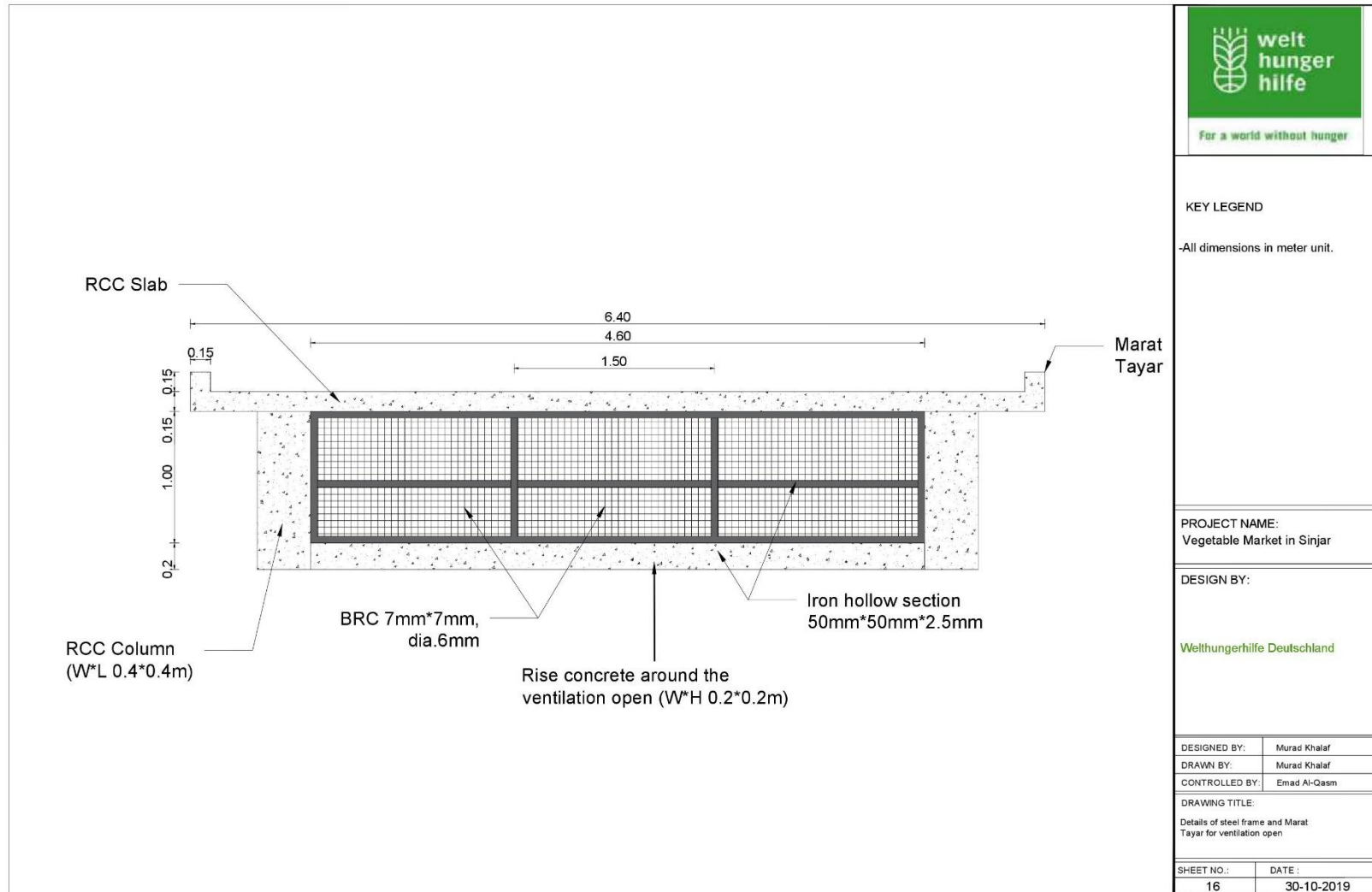
DATE :

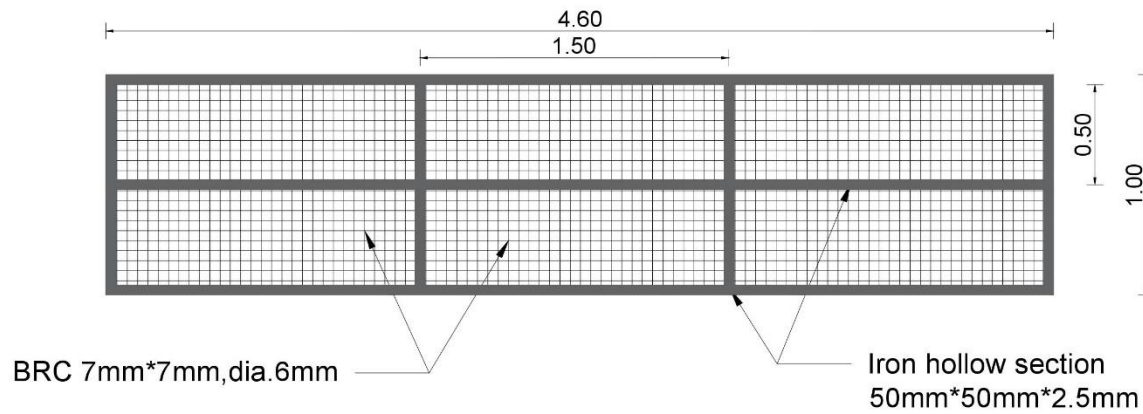
30-10-2019











For a world without hunger

#### KEY LEGEND

-All dimensions in meter unit.

PROJECT NAME:  
Vegetable Market in Sinjar

DESIGN BY:

Welthungerhilfe Deutschland

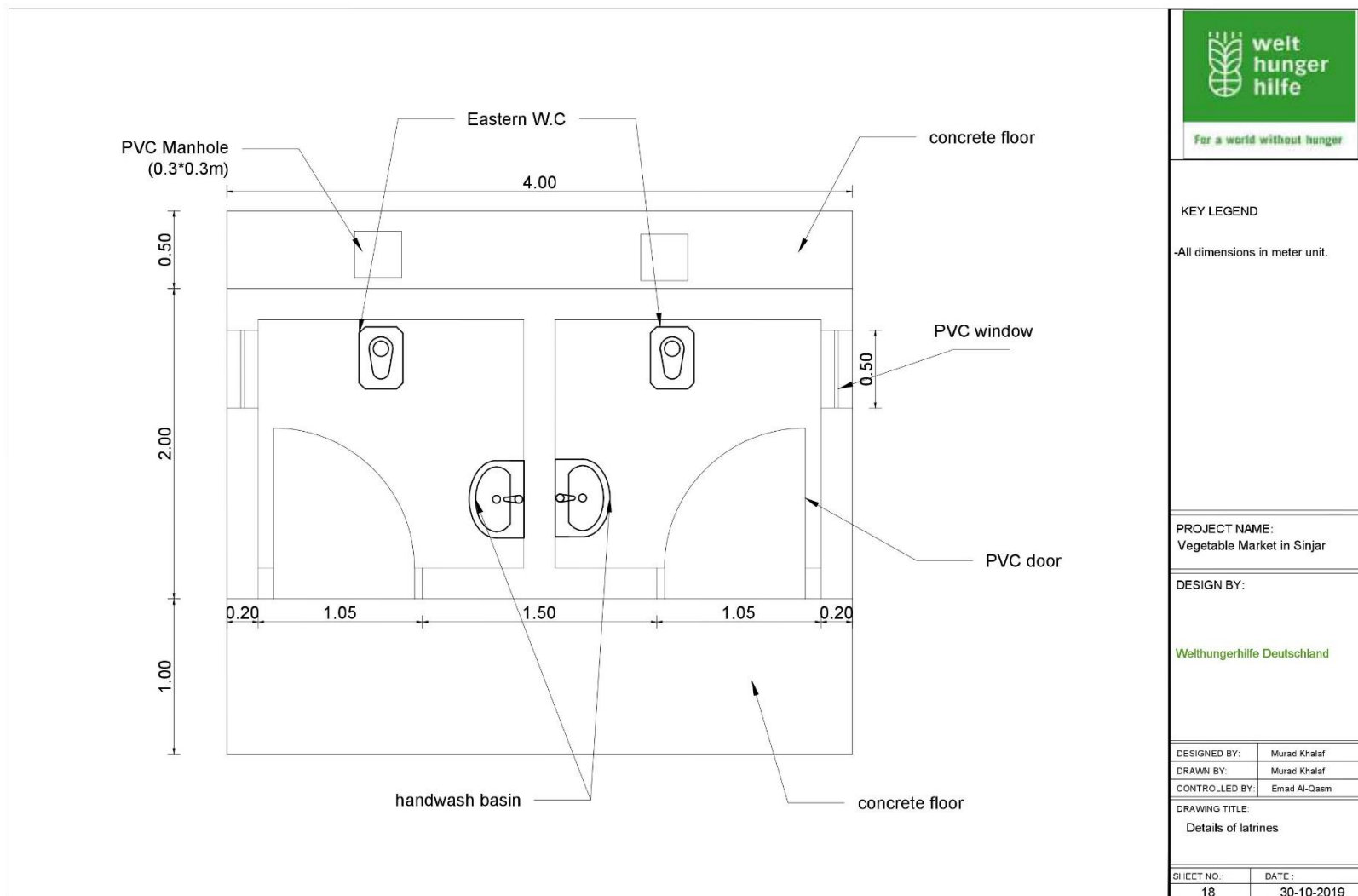
DESIGNED BY: Murad Khalaf

DRAWN BY: Murad Khalaf

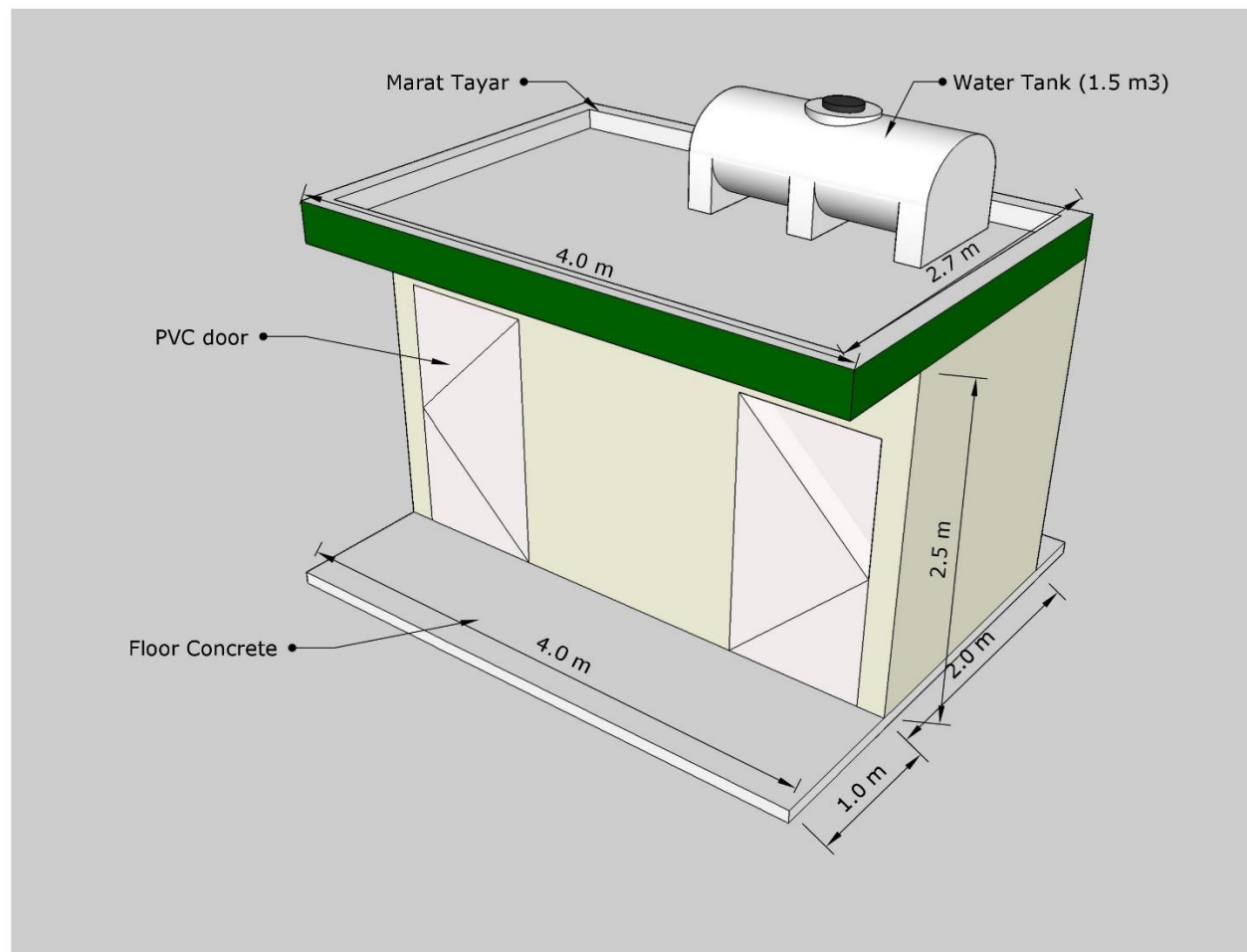
CONTROLLED BY: Emad Al-Qasbi

DRAWING TITLE:  
Detail of steel for ventilation

SHEET NO.: 17 DATE: 30-10-2019







For a world without hunger

**KEY(LEGEND):**

- All dimensions in meter

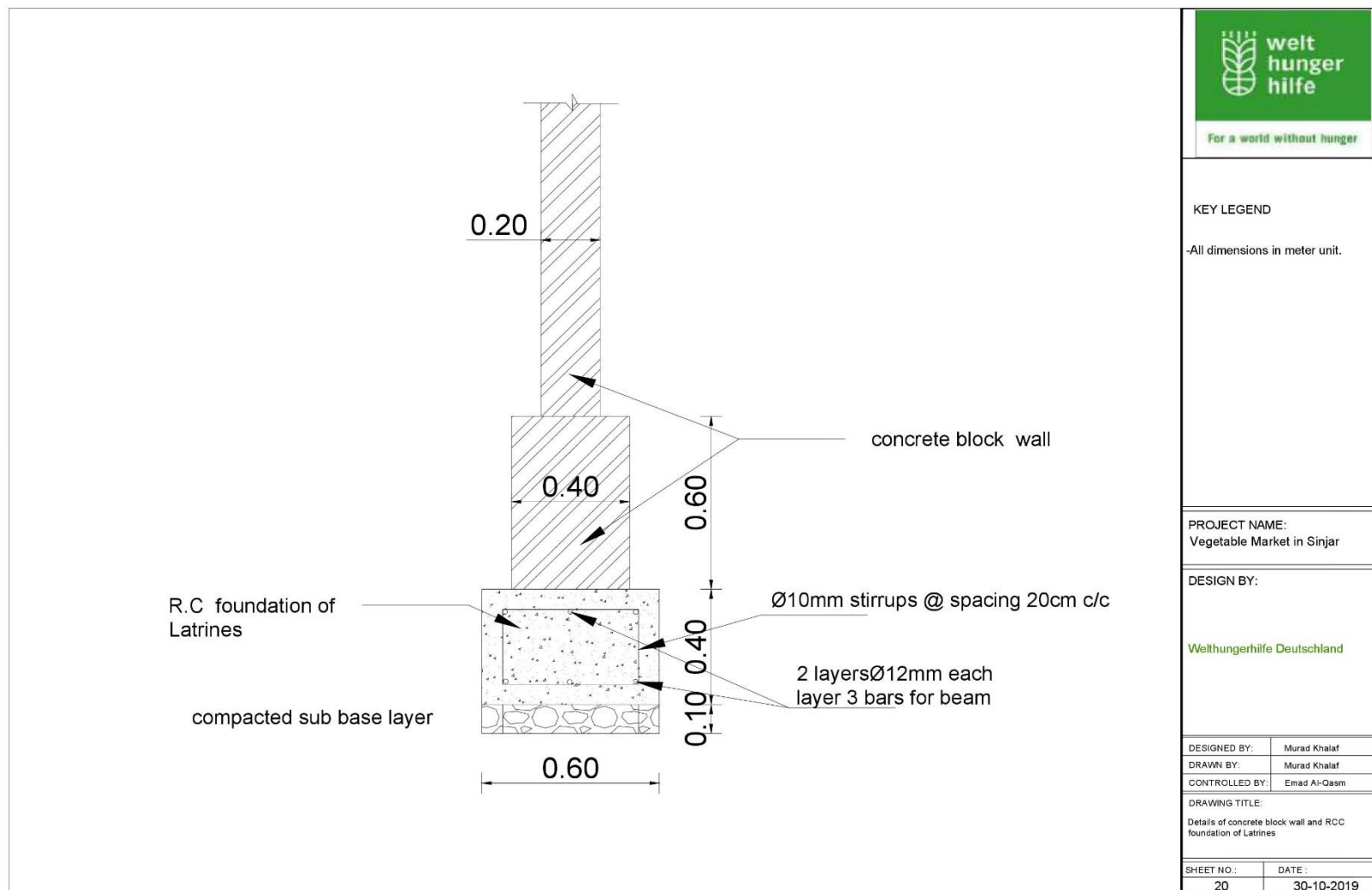
**PROJECT NAME:**  
Vegetable Market Project in  
Sinjar

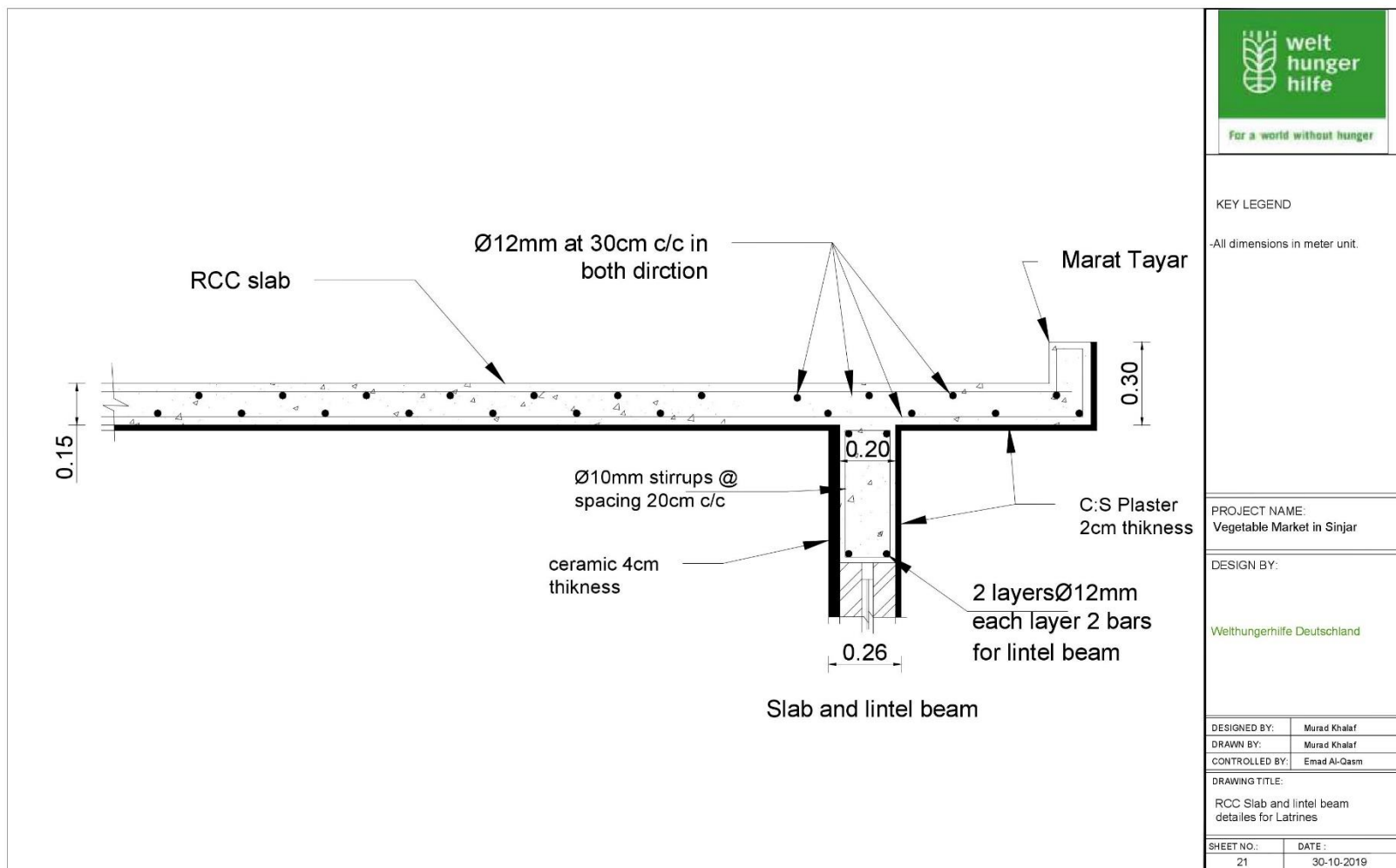
**DESIGN BY:**  
  
**Welthungerhilfe Deutschland**

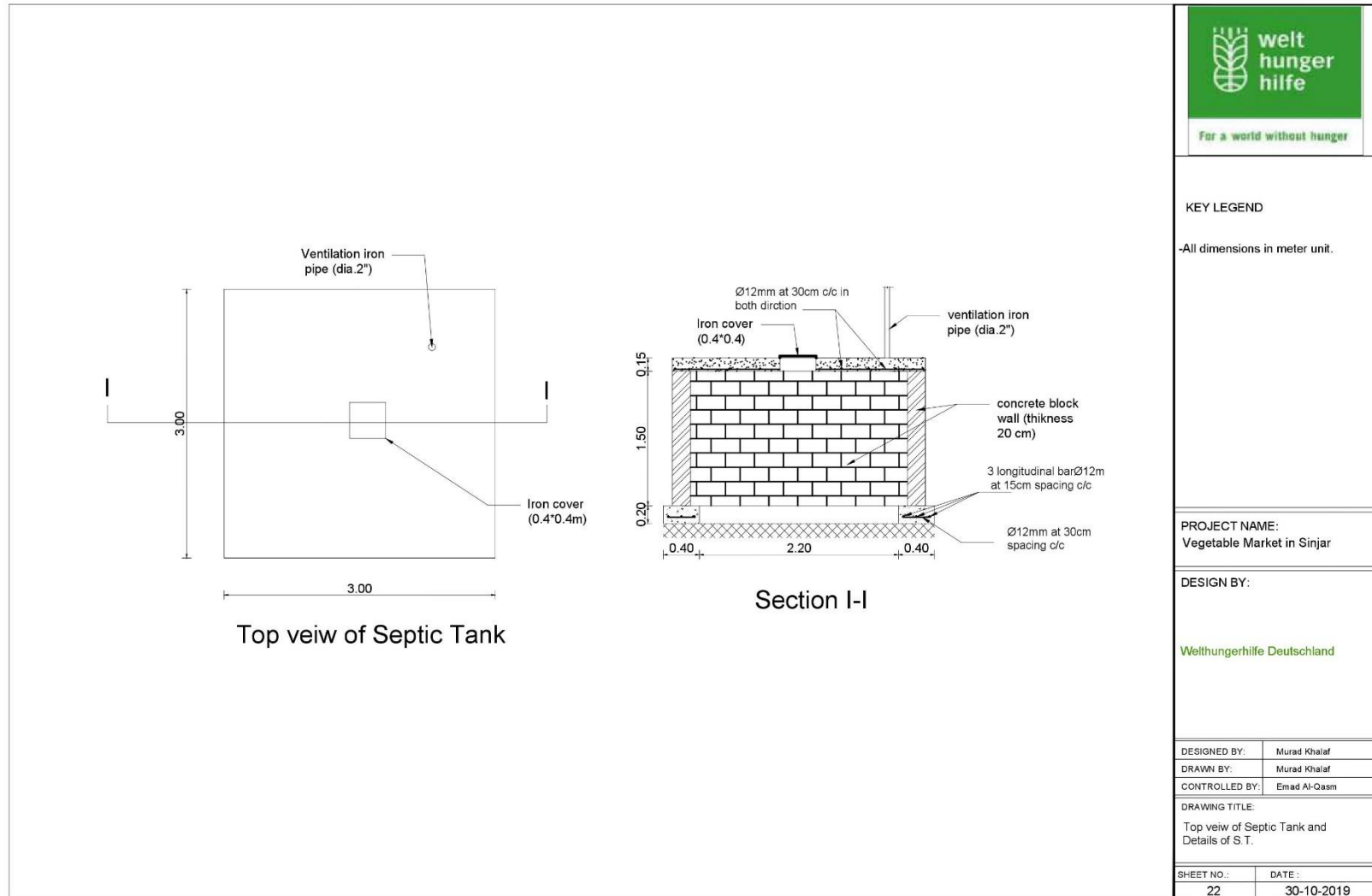
DESIGNED BY:	Murad Khalaf
DRAWN BY:	Murad Khalaf
CONTROLLED BY:	Emad Al-Qasm

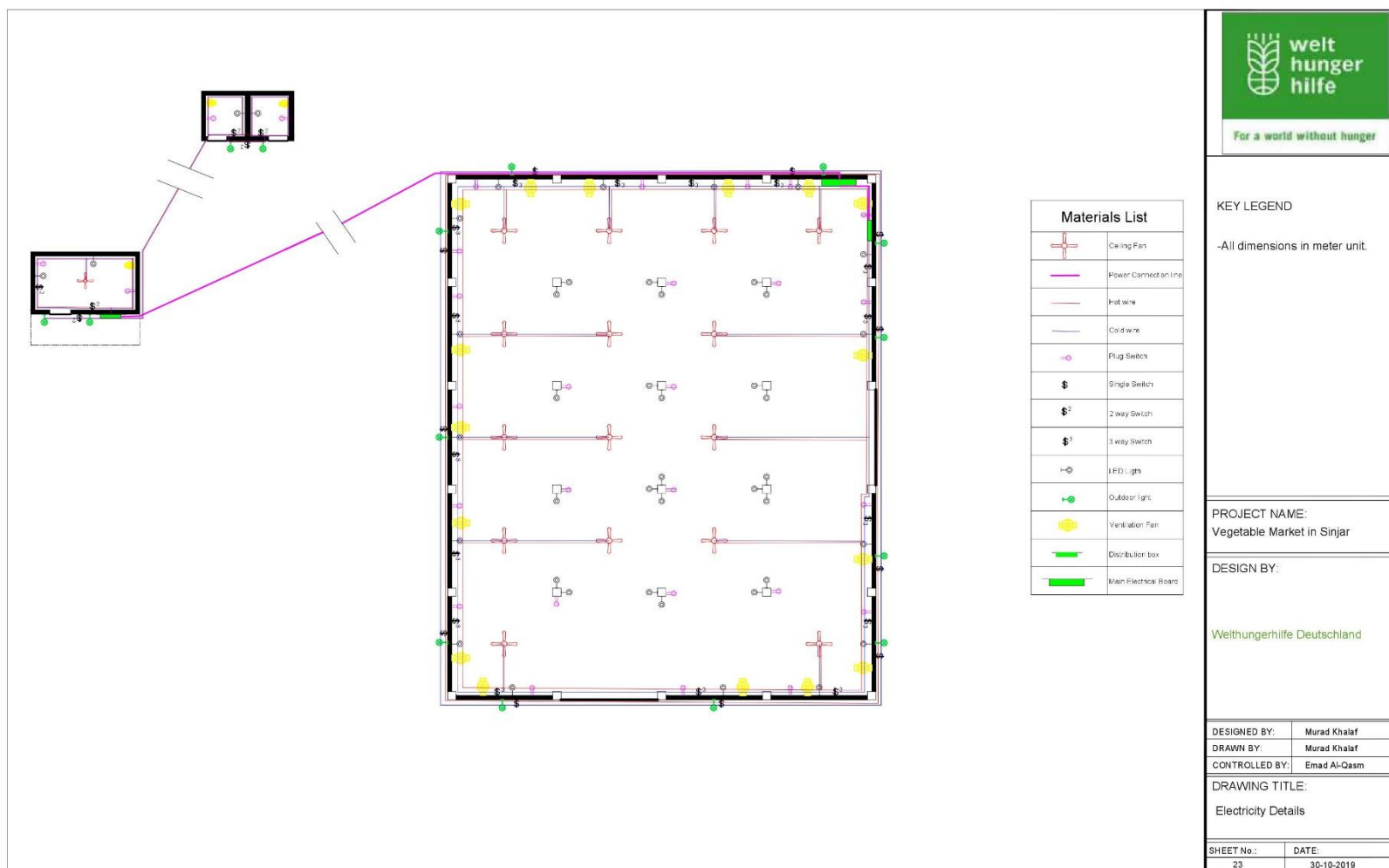
**DRAWING TITLE:**  
Latrines WC-3D Plan

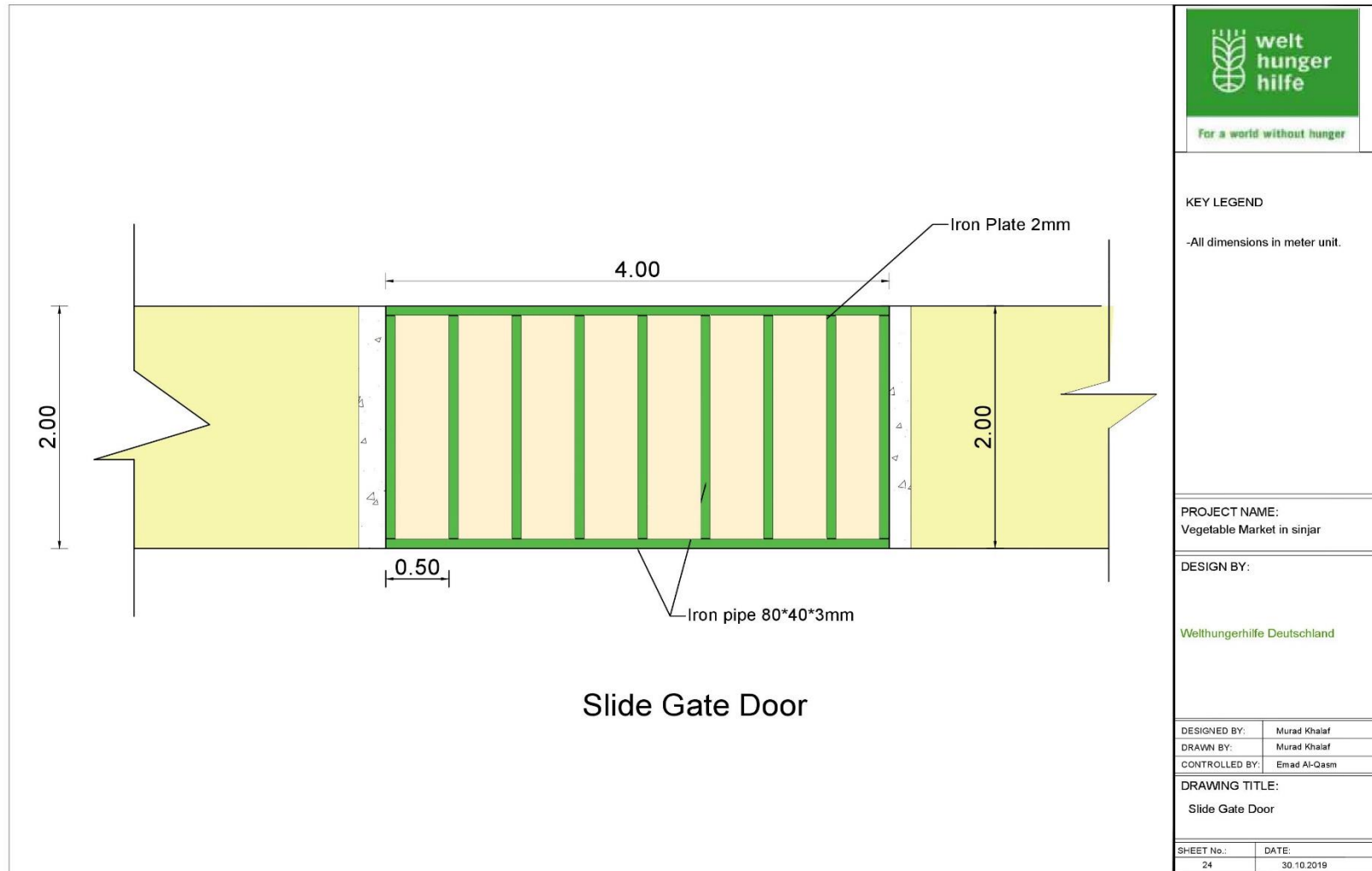
<b>Sheet No.</b>	<b>Date:</b>
19	30.10.2019

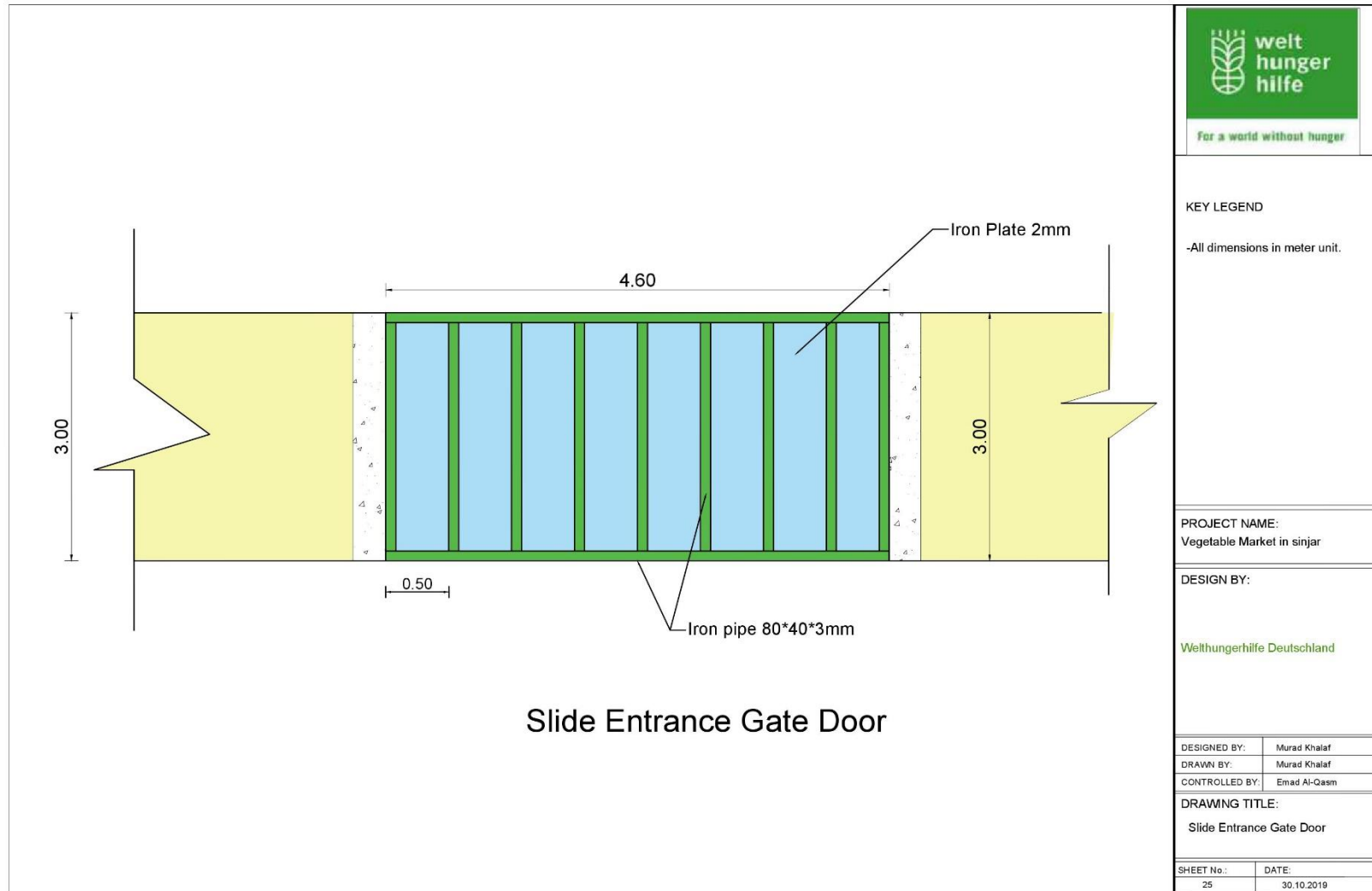


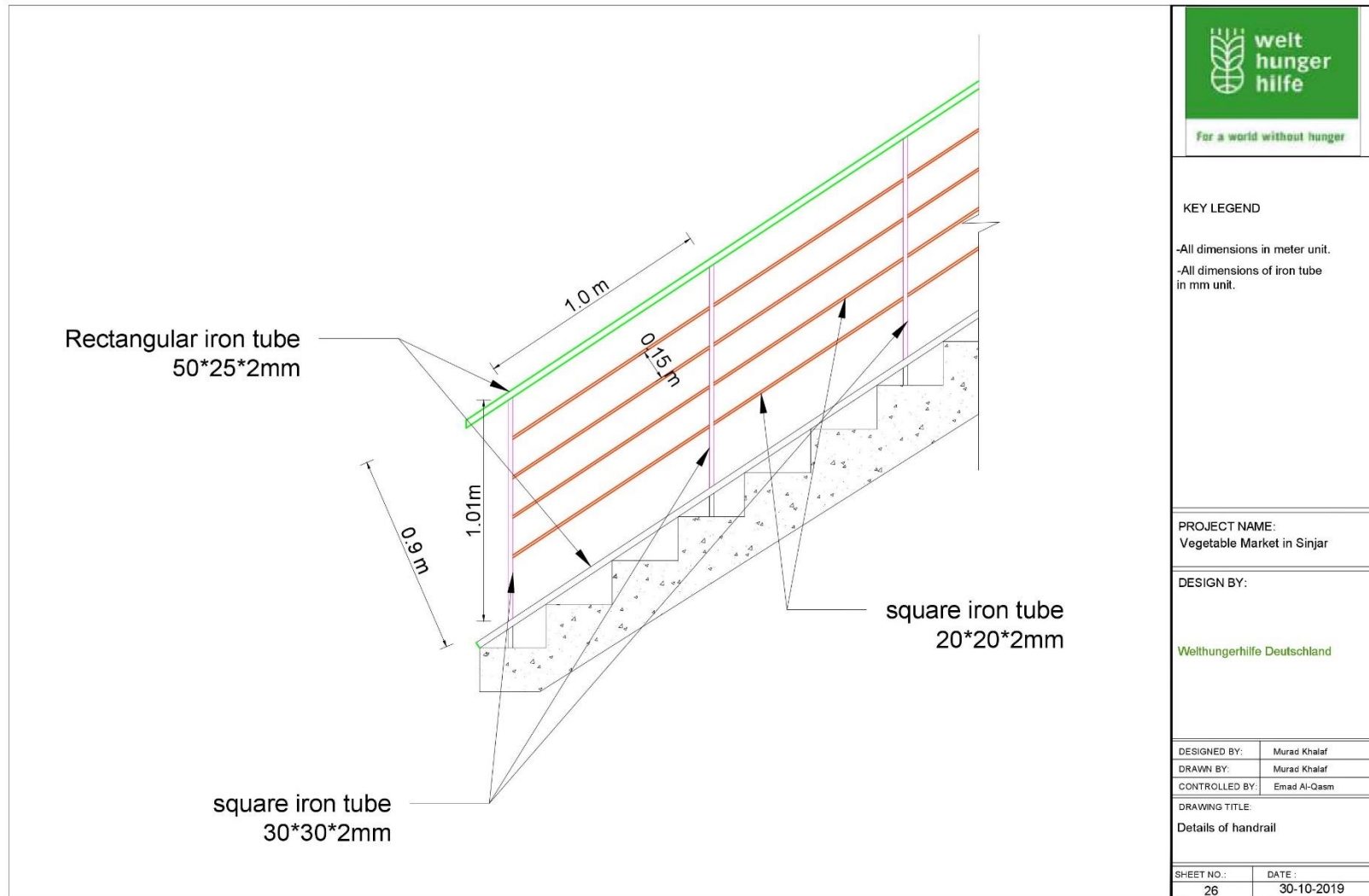




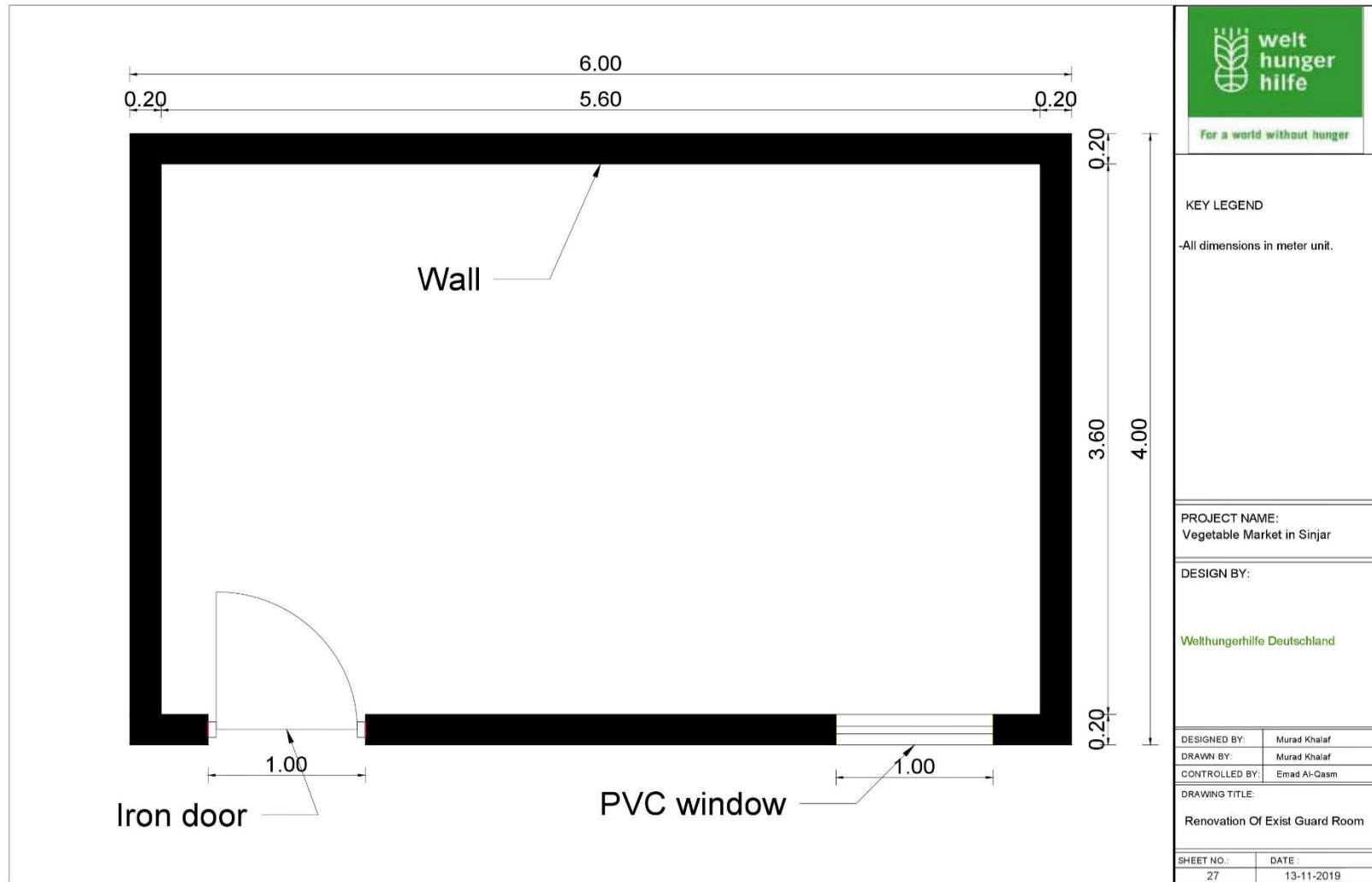












Vegetables Market 36.315690, 41.871945

